

# MAGAIN



**4 Barbara Avenue Morphett Vale SA**

**3**  **1**  **1** 

Please call Craig Thomson for more information.

Situated on a generous and relatively flat 760m2 allotment with a commanding frontage this tightly held 3 bedroom home is perfect for those wanting to nest or invest.

What we love about this property:

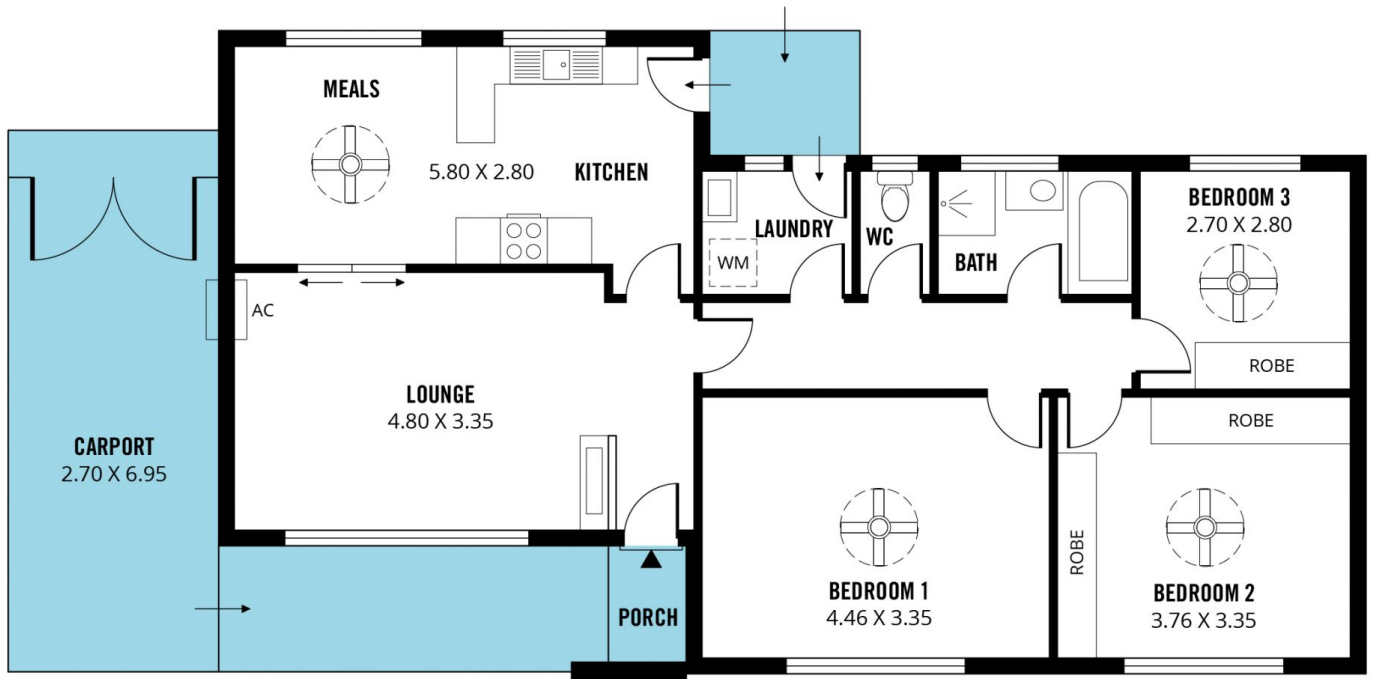
- Good sized allotment.
- The master bedroom is large.
- Nice big backyard.
- Access through to a shed.
- Close to shops and amenities.
- Close to bus stops and public transport
- Close to the Emu hotel.
- Plenty of parks to enjoy nearby.

[For full version visit the website](https://www.magain.com.au/property/4-barbara-avenue-morphett-vale-sa/8427104)

**Type** : House  
**Price** : \$ 482,500  
**Land Size** : 760 sqm  
**View** : <https://www.magain.com.au/property/4-barbara-avenue-morphett-vale-sa/8427104>



**Craig Thomson**  
**08 8366 2292**



Scale in metres. This drawing is for illustration purposes only. All measurements are approximate and details intended to be relied upon should be independently verified.

Produced by **The Fotobase Group**