

MAGAIN



15 Jupiter Street Hallett Cove SA

4 2 4

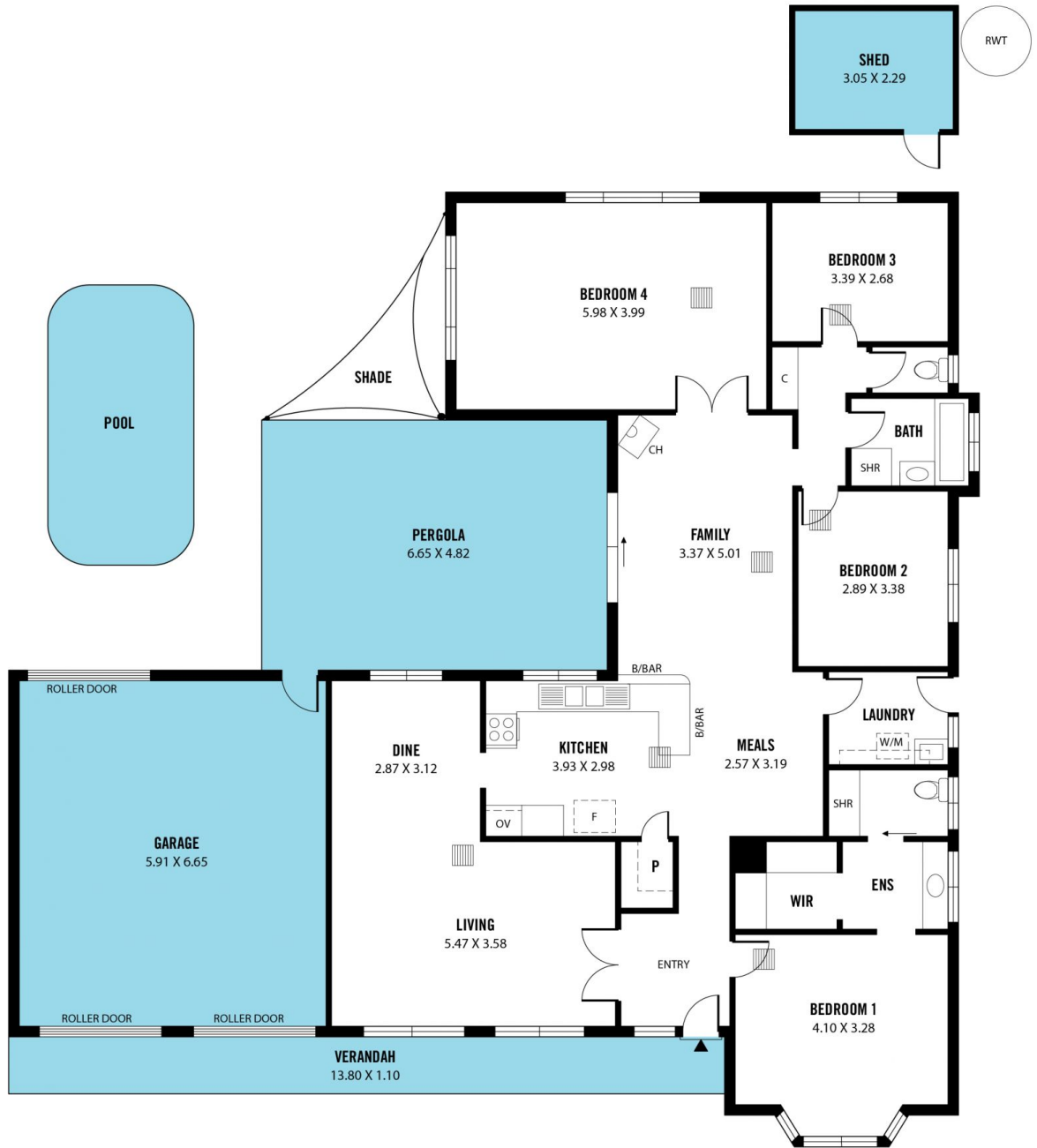
Contact Pete Fallon for viewing times.

Located in the highly popular suburb of Hallett Cove, this home is sure to appeal to buyers looking for a bit more space for their families. Hallett Cove is highly sought after for its coastal lifestyle; the beach is literally minutes away and can be seen from the home. Hallett Cove Shopping Centre is only a couple minutes drive and has all your shopping needs. There are great quality schools such as Hallett Cove R-12 and the train line takes you easily into the CBD. There is so much to love about this location.

As you approach the home you will appreciate the abundance of car parking available, with a double garage and large driveway to cater for all the vehicles of the

Type : House
Price : \$ 710,000
Building Size : 209 sqm
Land Size : 603 sqm
View : <https://www.magain.com.au/property/15-jupiter-street-hallett-cove-sa/8427124>

[For full version visit the website](https://www.magain.com.au)



Scale in metres. This drawing is for illustration purposes only. All measurements are approximate and details intended to be relied upon should be independently verified.

Produced by **The Fotobase Group**