




# MAGAIN



## 13 Horsley Court Morphett Vale SA

4  2  3 

Contact Pete Fallon for viewing times.

Located in the highly popular suburb of Morphett Vale, this beautiful family home is going to suit a wide range of buyers, from first home buyers to downsizers and investors alike. The location of this property is perfect - there are great schools nearby including Woodcroft College and Prescott College, as well as local primary schools within walking distance. Southgate Plaza and Woodcroft Shopping Centre are both easily accessible for your shopping needs. Public transport is at your fingertips taking you easily to the CBD, the coast to vines bike trail is at the end of the street taking you straight to the beautiful McLaren Vale region and it is only a 10 minute drive to the beautiful beaches of the Fleurieu Peninsula; there is so

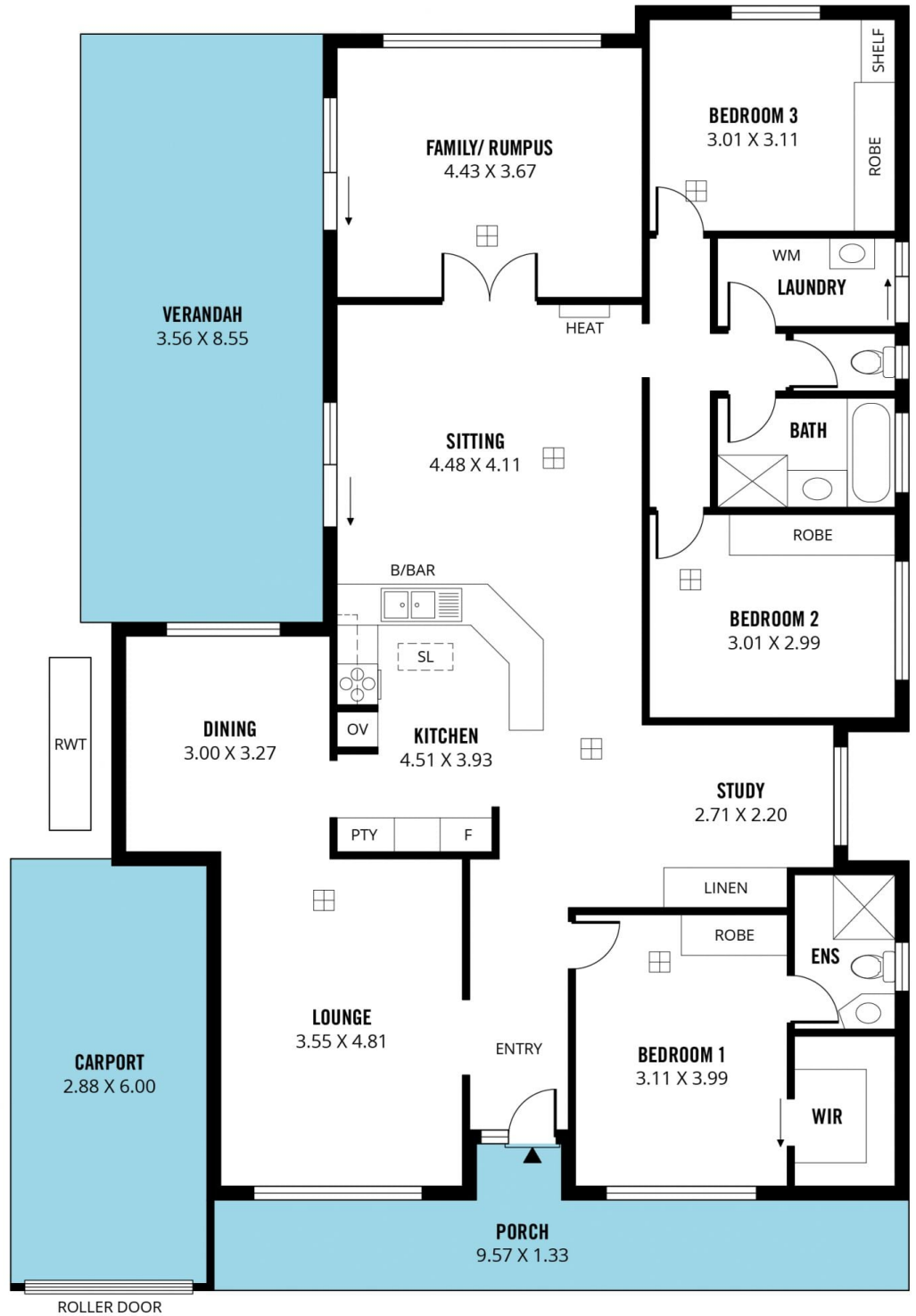
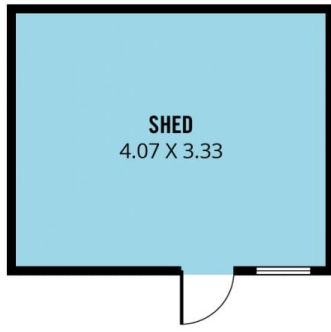
**Type** : House  
**Price** : \$ 661,000  
**Building Size** : 184 sqm  
**Land Size** : 757 sqm  
**View** : <https://www.magain.com.au/property/13-horsley-court-morphett-vale-sa/8427147>

[For full version visit the website](https://www.magain.com.au)

<https://www.magain.com.au>  
Magain Real Estate

52 Hillier Road Morphett Vale SA  
08 8366 2292

NOT IN POSITION



Scale in metres. This drawing is for illustration purposes only. All measurements are approximate and details intended to be relied upon should be independently verified.

Produced by **The Fotobase Group**