

# MAGAIN



## 40 Suzanne Avenue Morphett Vale SA

4 1 1

Please contract Craig for all your property advice

Located on a corner block, this three bedroom home boasts a versatile study/sunroom and one modern bathroom. The property offers ample living space, including a spacious lounge area and a separate dining area that leads out to a stunning outdoor deck, perfect for entertaining guests or relaxing in the sun.

The deck area is one of the standout features of this property, with plenty of space for outdoor furniture and a barbecue, making it the perfect spot for hosting family and friends. The deck area also provides access to the large backyard, which includes side access to store boats, caravans or other recreational vehicles.

[For full version visit the website](https://www.magain.com.au/property/40-suzanne-avenue-morphett-vale-sa/8427169)

**Type** : House  
**Price** : \$ 585,000  
**Building Size** : 128 sqm  
**Land Size** : 764 sqm  
**View** : <https://www.magain.com.au/property/40-suzanne-avenue-morphett-vale-sa/8427169>



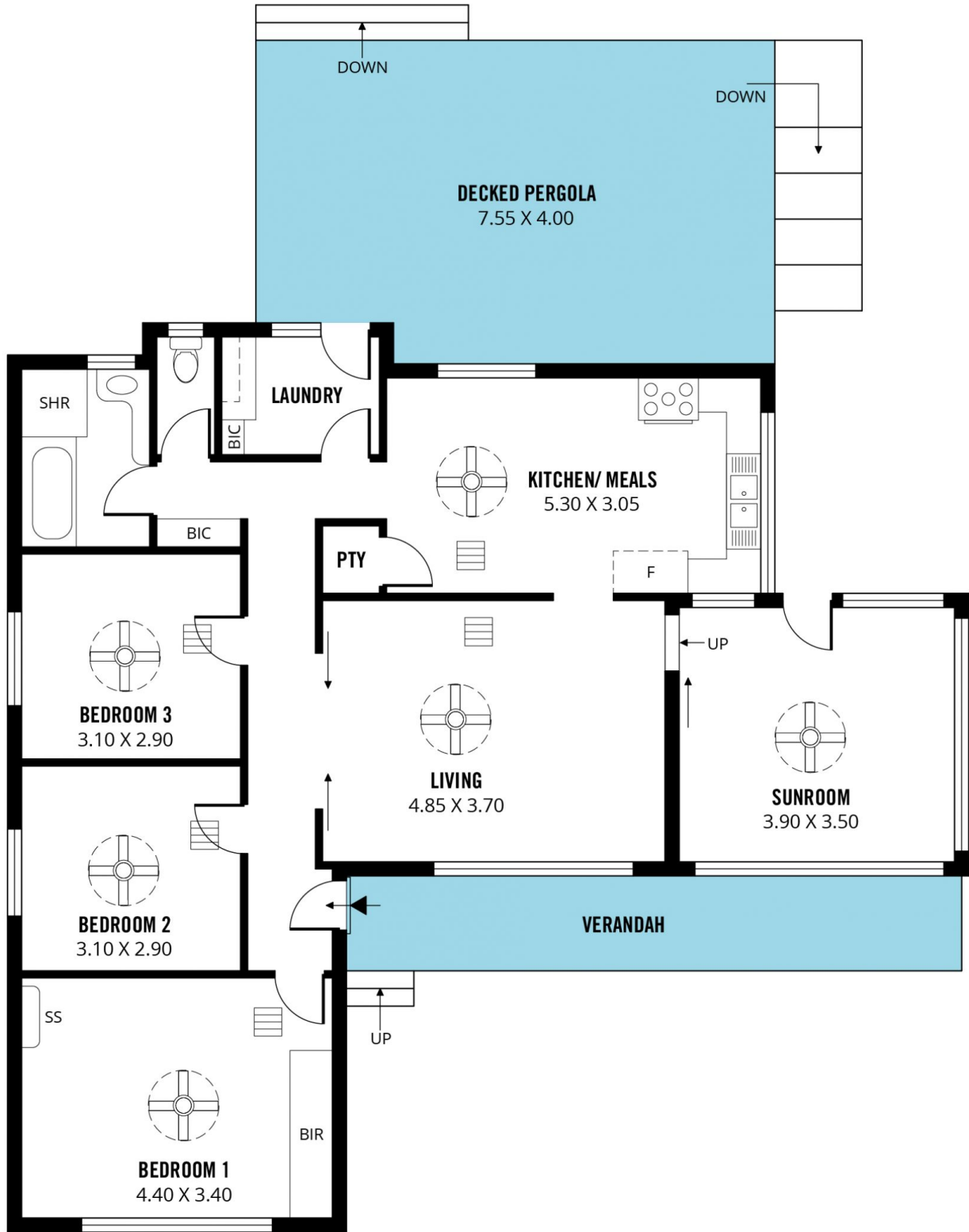
**Craig Thomson**  
08 8366 2292



**Andrew Robey**  
08 8366 2292

<https://www.magain.com.au>  
Magain Real Estate

52 Hillier Road Morphett Vale SA  
08 8366 2292



Scale in metres. This drawing is for illustration purposes only. All measurements are approximate and details intended to be relied upon should be independently verified. Produced by **The Fotobase Group**



Scale in metres. This drawing is for illustration purposes only. All measurements are approximate and details intended to be relied upon should be independently verified.

Produced by **The Fotobase Group**