

MAGAIN



12a Gosfield Crescent Hampstead Gardens SA

4 🚗 2 🚗 2 🚗

Please contact Robbie Leigh or Levi Sakkas from Magain Real Estate for all your property advice.

Welcome to 12a Gosfield Crescent, Hampstead Gardens. This one has been worth the wait!

Perfectly positioned on a corner allotment, this wonderful 2022 built family home boasts a modern and functional floorplan.

Offering a sophisticated blend of style, comfort and practicality. This Duel Level home boasts a generous sized floorplan of 230m2 under the main roof.

Starting downstairs with a wide hall entry with long and wide luxury vinyl plank flooring, study room, family living area and moving through to open plan kitchen, living and

Type : House
Price : \$ 1,361,000
Building Size : 230 sqm
Land Size : 400 sqm
View : <https://www.magain.com.au/property/12-a-gosfield-crescent-hampstead-gardens-sa/8427344>

[For full version visit the website](#)



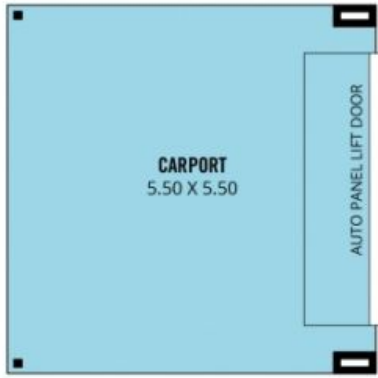
Robbie Leigh
08 8366 2292



Levi Sakkas
08 8366 2292

<https://www.magain.com.au>
Magain Real Estate

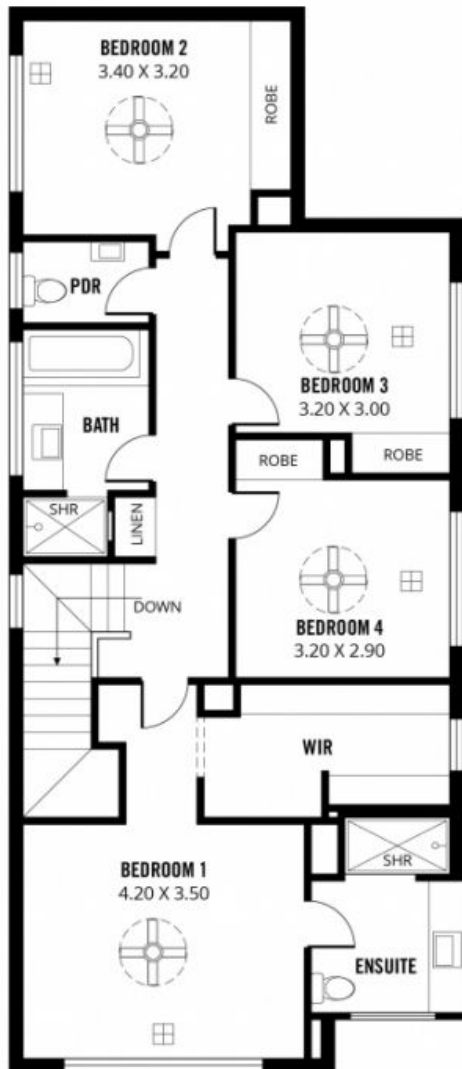
52 Hillier Road Morphett Vale SA
08 8366 2292



LOWER LIVING:	116m ²
UPPER LIVING:	98m ²
CARPORT:	38m ²
PORCH:	2m ²
ALFRESCO:	15m ²
TOTAL:	269m²



LOWER LEVEL



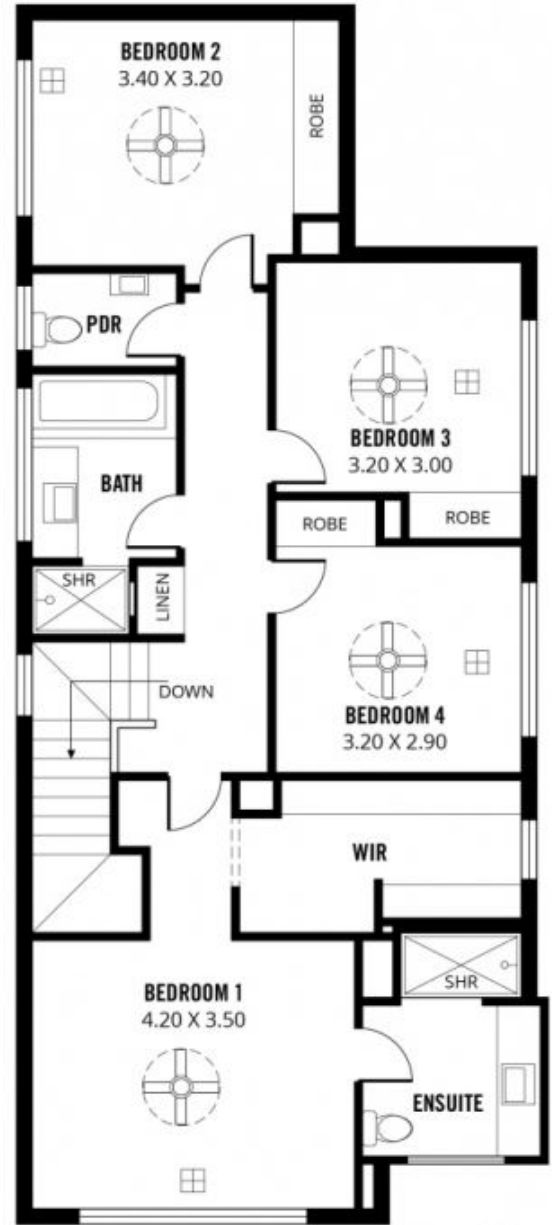
UPPER LEVEL





LOWER LEVEL

LOWER LIVING: 116m²
 UPPER LIVING: 98m²
 CARPORT: 38m²
 PORCH: 2m²
 ALFRESCO: 15m²
TOTAL: 269m²



UPPER LEVEL



Scale in metres. This drawing is for illustration purposes only. All measurements are approximate and details intended to be relied upon should be independently verified.