

MAGAIN



20 Westmoreland Road Morphett Vale SA

3 1 2

Please contact Craig Thomson from Magain Real Estate for all your property advice.

Discover your perfect first home or investment opportunity in the heart of Morphett Vale! This delightful 3-bedroom, 1-bathroom property offers a fantastic lifestyle with convenience and comfort in a sought-after suburb of Adelaide.

Key Features:

Spacious Bedrooms: Three well-sized bedrooms, perfect for a growing family or those needing extra space.
Kitchen: Enjoy cooking in a functional kitchen equipped with ample storage and a cozy dining area.

[For full version visit the website](https://www.magain.com.au/property/20-westmoreland-road-morphett-vale-sa/8427346)

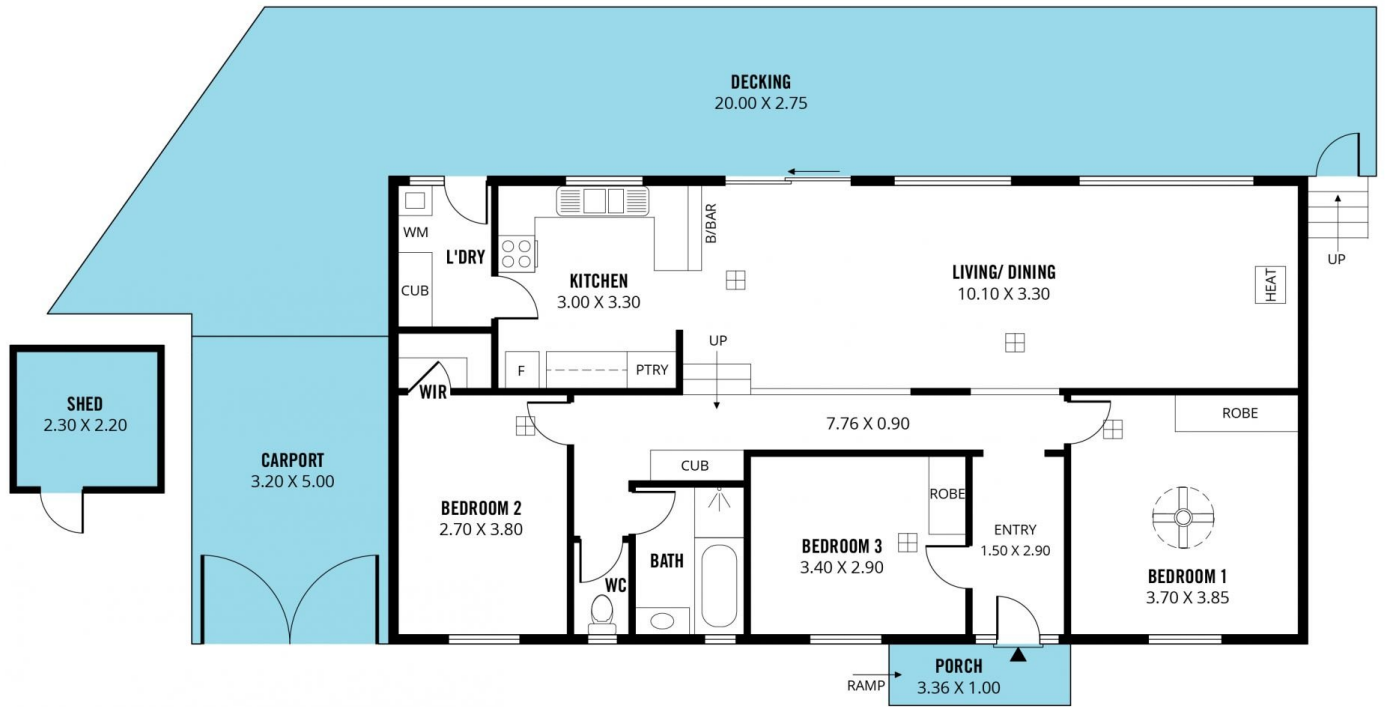
Type : House
Price : \$ 665,000
Building Size : 121 sqm
Land Size : 545 sqm
View : <https://www.magain.com.au/property/20-westmoreland-road-morphett-vale-sa/8427346>



Craig Thomson
08 8366 2292

<https://www.magain.com.au>
Magain Real Estate

52 Hillier Road Morphett Vale SA
08 8366 2292



Scale in metres. This drawing is for illustration purposes only. All measurements are approximate and details intended to be relied upon should be independently verified.

Produced by **The Fotobase Group**