

MAGAIN



1 Almond Grove Morphett Vale SA

3 1 3

Please contact Robbie Leigh or Levi Sakkas from Magain Real Estate for all your property advice.

Whether you have plans to nest, invest or rent out, 1 Almond Grove, Morphett Vale presents a fantastic opportunity to secure a family home on a generous 480m2 corner allotment. Offering an easy and convenient lifestyle in a sought after location with plenty of scope to make it your own.

Boasting three bedrooms, main bathroom and separate toilet, open plan living dining and updated kitchen with gas cooktop. Updated floating flooring throughout, reverse cycle heating/cooling. Undercover carport, additional parking space and more.

[For full version visit the website](https://www.magain.com.au/property/1-almond-grove-morphett-vale-sa/8427375)

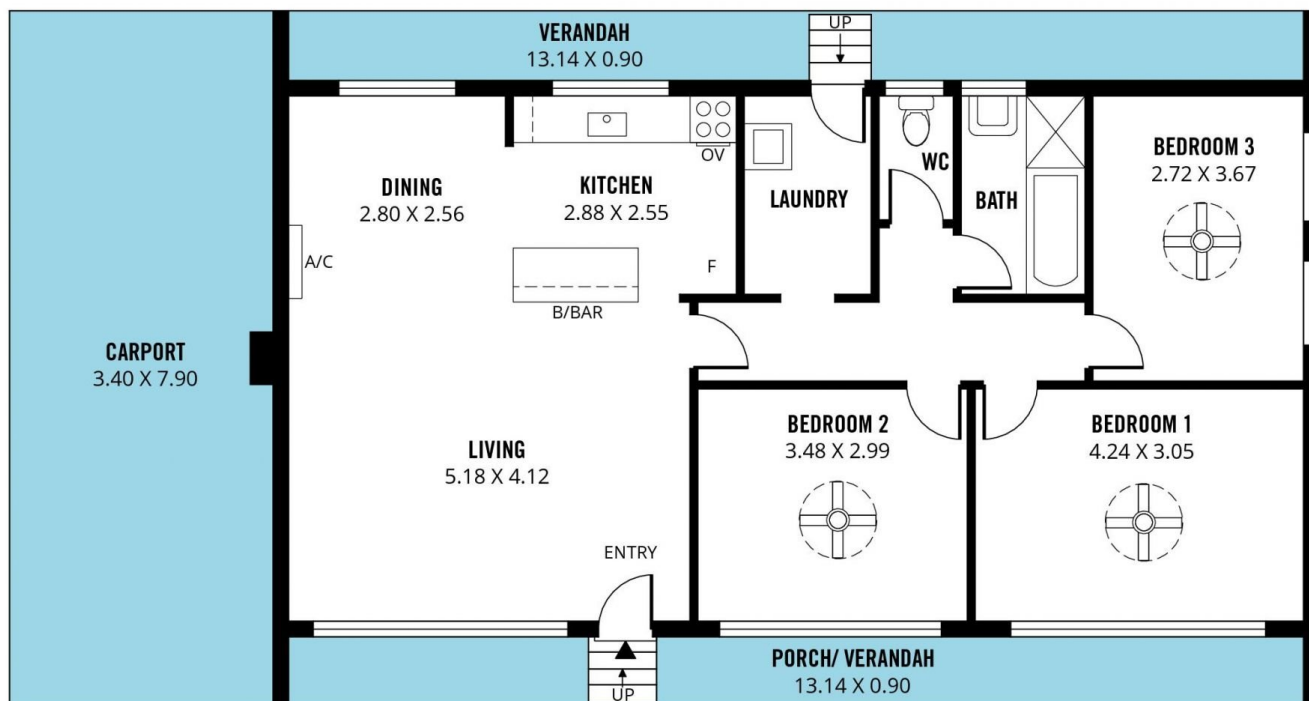
Type : House
Price : \$ 641,000
Land Size : 480 sqm
View : <https://www.magain.com.au/property/1-almond-grove-morphett-vale-sa/8427375>



Robbie Leigh
08 8366 2292



Levi Sakkas
08 8366 2292



Scale in metres. This drawing is for illustration purposes only. All measurements are approximate and details intended to be relied upon should be independently verified.

Produced by **The Fotobase Group**