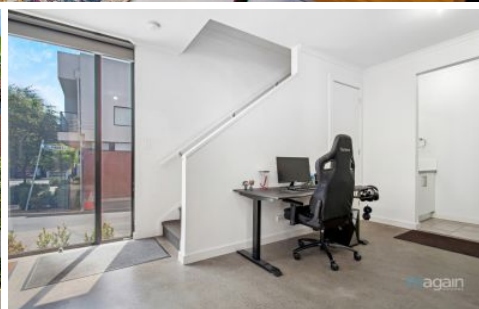
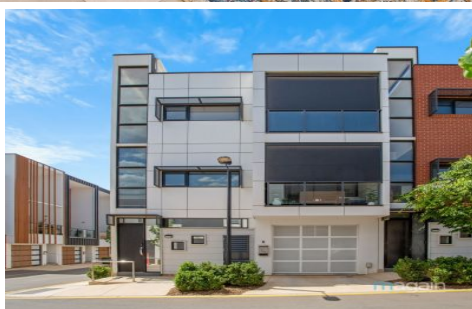


# MAGAIN



## 6 Almond Lane Tonsley SA

2 1 1

Please contact Robbie Leigh from Magain Real Estate for all your property advice.

Welcome Home to 6 Almond Lane Tonsley!

Inspired by the unique European design forms and industrial warehouse aesthetic, this three-story home is beautifully appointed and boast outstanding value in Adelaide's best new address, Tonsley Village

The Urban Garage has been designed to offer alternative modern style with a smart use of space. The result is low maintenance living without sacrificing lifestyle.

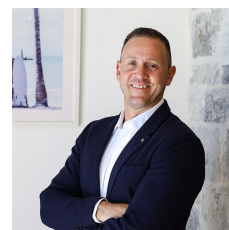
Finished to perfection with ducted reverse cycle A/C for year-round comfort. Everything has been thought of

[For full version visit the website](https://www.magain.com.au/property/6-a-lmond-lane-tonsley-sa/8427403)

**Type** : House  
**Price** : \$ 680,000  
**Building Size** : 148 sqm  
**View** : <https://www.magain.com.au/property/6-a-lmond-lane-tonsley-sa/8427403>



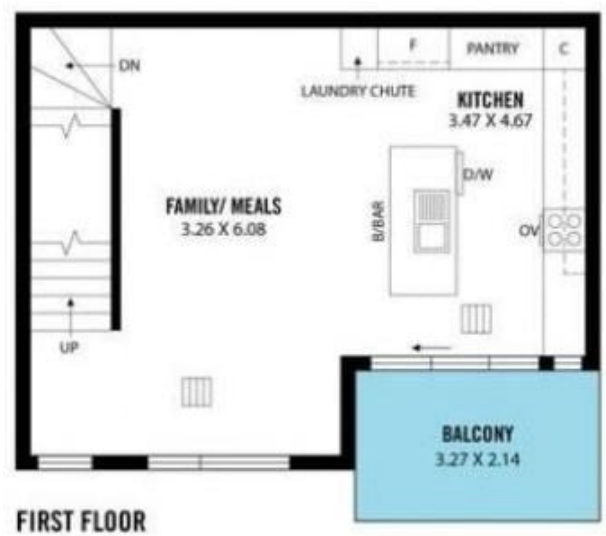
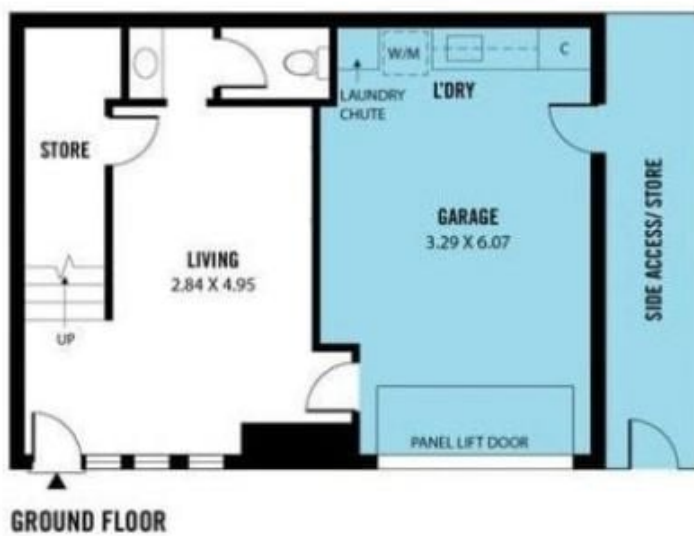
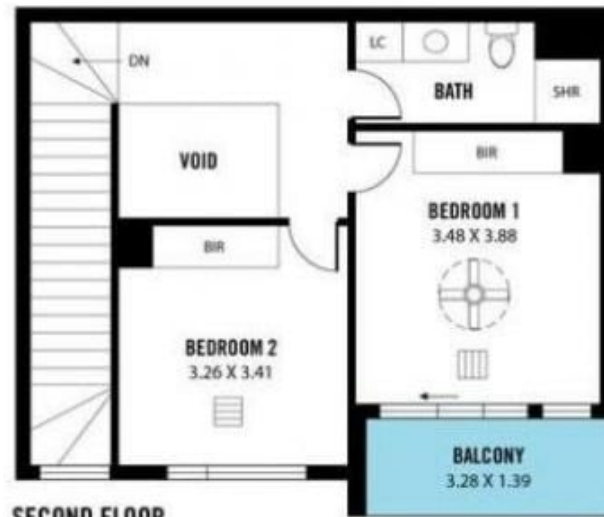
**Robbie Leigh**  
08 8366 2292



**Levi Sakkas**  
08 8366 2292

<https://www.magain.com.au>  
Magain Real Estate

52 Hillier Road Morphett Vale SA  
08 8366 2292



Scale in metres. This drawing is for illustration purposes only. All measurements are approximate and details intended to be relied upon should be independently verified.

Produced by The Fotobase Group