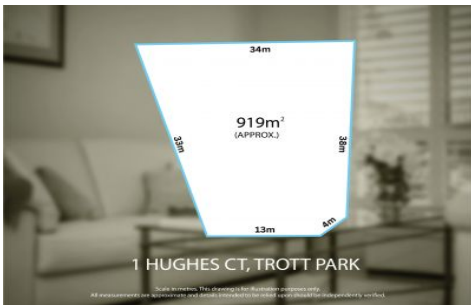


# MAGAIN



## 1 Hughes Court Trott Park SA

4 2 4

Please contact Robbie Leigh or Levi Sakkas from Magain Real Estate for all your property advice.

A fantastic opportunity awaits to secure a well maintained and updated two story family home, on a generous 919m<sup>2</sup> corner allotment with sub division options on the table (STCC).

Nestled in a prized and convenient location, this spacious home showcases a perfect combination of practicality and comfort.

Freshly painted throughout, downstairs boasts open plan living, dining and updated kitchen that finds easy sliding door access to your outdoor undercover entertaining area. Second family living/lounge, dedicated dining room/optional

[For full version visit the website](https://www.magain.com.au/property/1-hughes-court-trott-park-sa/8427417)

**Type** : House  
**Price** : \$ 1,008,000  
**Building Size** : 192 sqm  
**Land Size** : 919 sqm  
**View** : <https://www.magain.com.au/property/1-hughes-court-trott-park-sa/8427417>



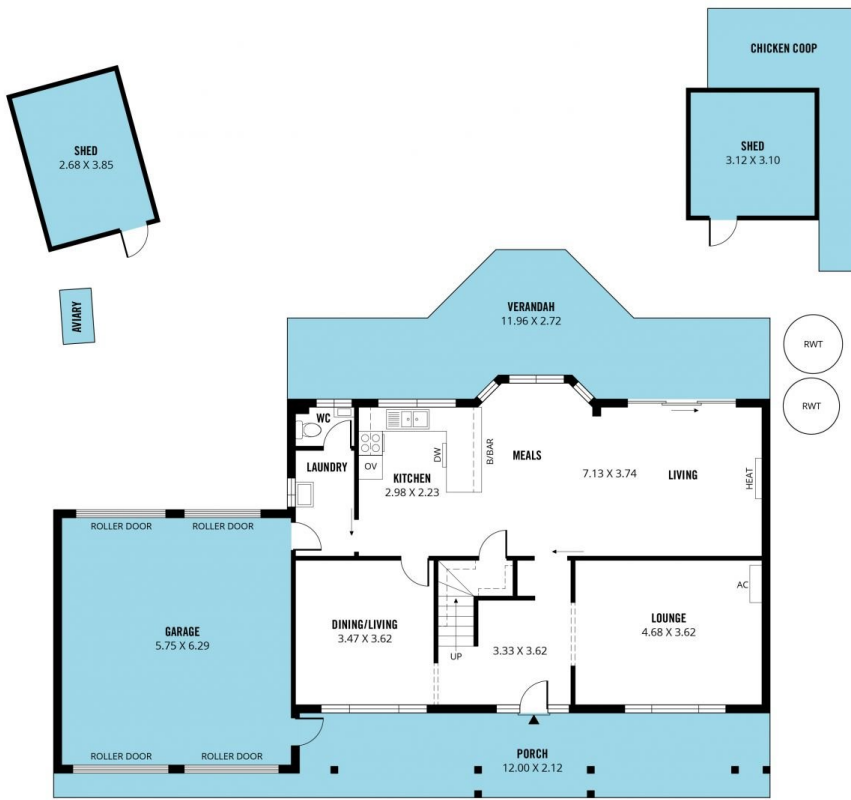
**Robbie Leigh**  
08 8366 2292



**Levi Sakkas**  
08 8366 2292

<https://www.magain.com.au>  
Magain Real Estate

52 Hillier Road Morphett Vale SA  
08 8366 2292



GROUND FLOOR



UPPER FLOOR



Scale in metres. This drawing is for illustration purposes only. All measurements are approximate and details intended to be relied upon should be independently verified.

Produced by The Fotobase Group