

MAGAIN



10/2 Grey Box Avenue Noarlunga Centre SA

2 1 1

Please contact Andrew Robey from Magain Real Estate for all your property advice.

This modern apartment offers an excellent entry point for first-time buyers or a fantastic investment opportunity. With a spacious and light-filled layout, this property delivers a comfortable and practical lifestyle.

Featuring two well-sized bedrooms, both with built-in robes and ceiling fans, it's designed for convenience and ease. Whether you're relaxing inside or enjoying the outdoors, the open-plan living, dining, and kitchen area flows seamlessly out to a private balcony, perfect for unwinding with a morning coffee.

[For full version visit the website](https://www.magain.com.au/property/10-2-grey-box-avenue-noarlunga-centre-sa/8427434)

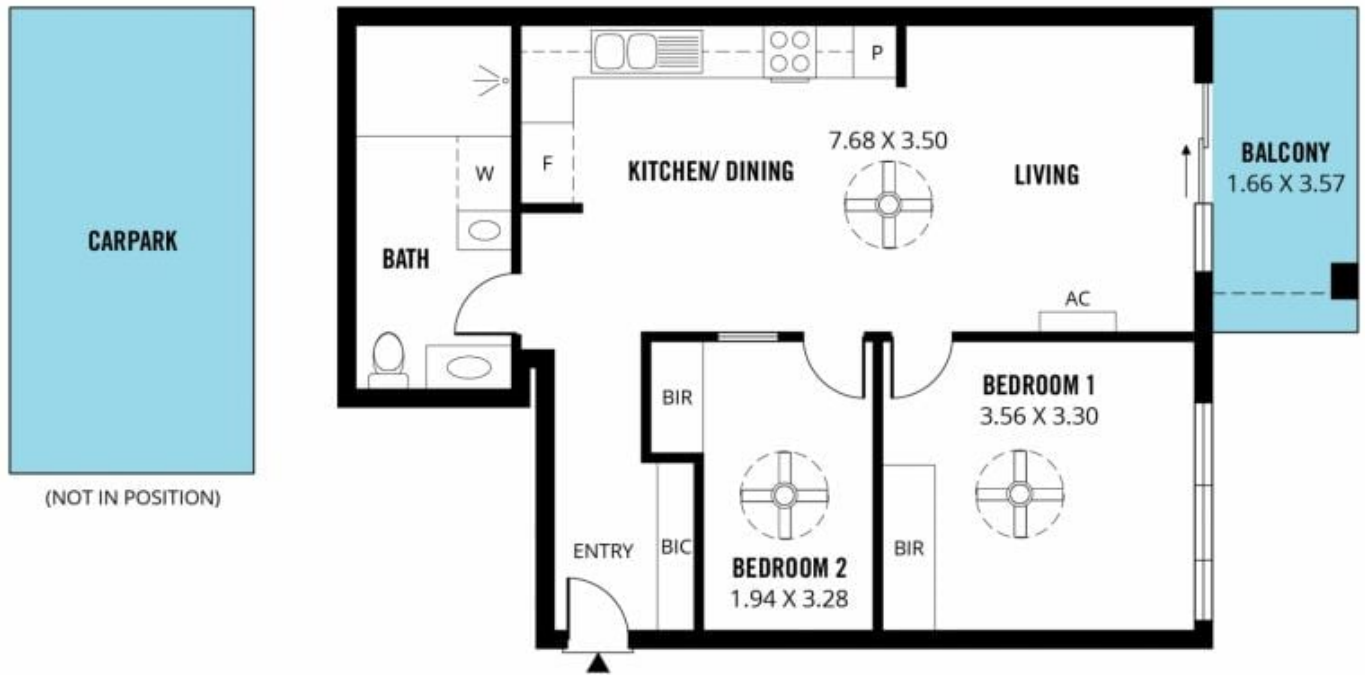
Type : Townhouse
Building Size : 63 sqm
View : <https://www.magain.com.au/property/10-2-grey-box-avenue-noarlunga-centre-sa/8427434>



Andrew Robey
08 8366 2292

<https://www.magain.com.au>
Magain Real Estate

52 Hillier Road Morphett Vale SA
08 8366 2292



Scale in metres. This drawing is for illustration purposes only. All measurements are approximate and details intended to be relied upon should be independently verified.

Produced by **The Fotobase Group**