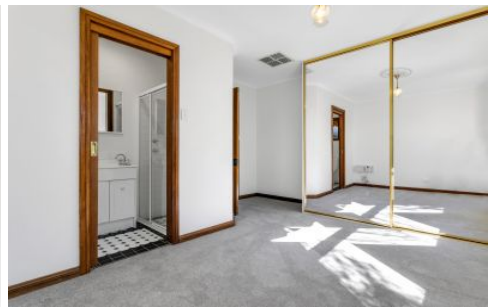





MAGAIN



48 Babbacombe Drive MOANA SA

3  **2**  **1** 

Positioned in the beautiful beachside suburb of Moana, this impressive three-bedroom family home with attractive curb-side appeal showing off a stunning bluestone facade is poised to embrace an easy-living, relaxed lifestyle. Where courtyard living doesn't mean compromise, while downsizers will find it ideal as will younger generations looking to invest in this prized coastal location.

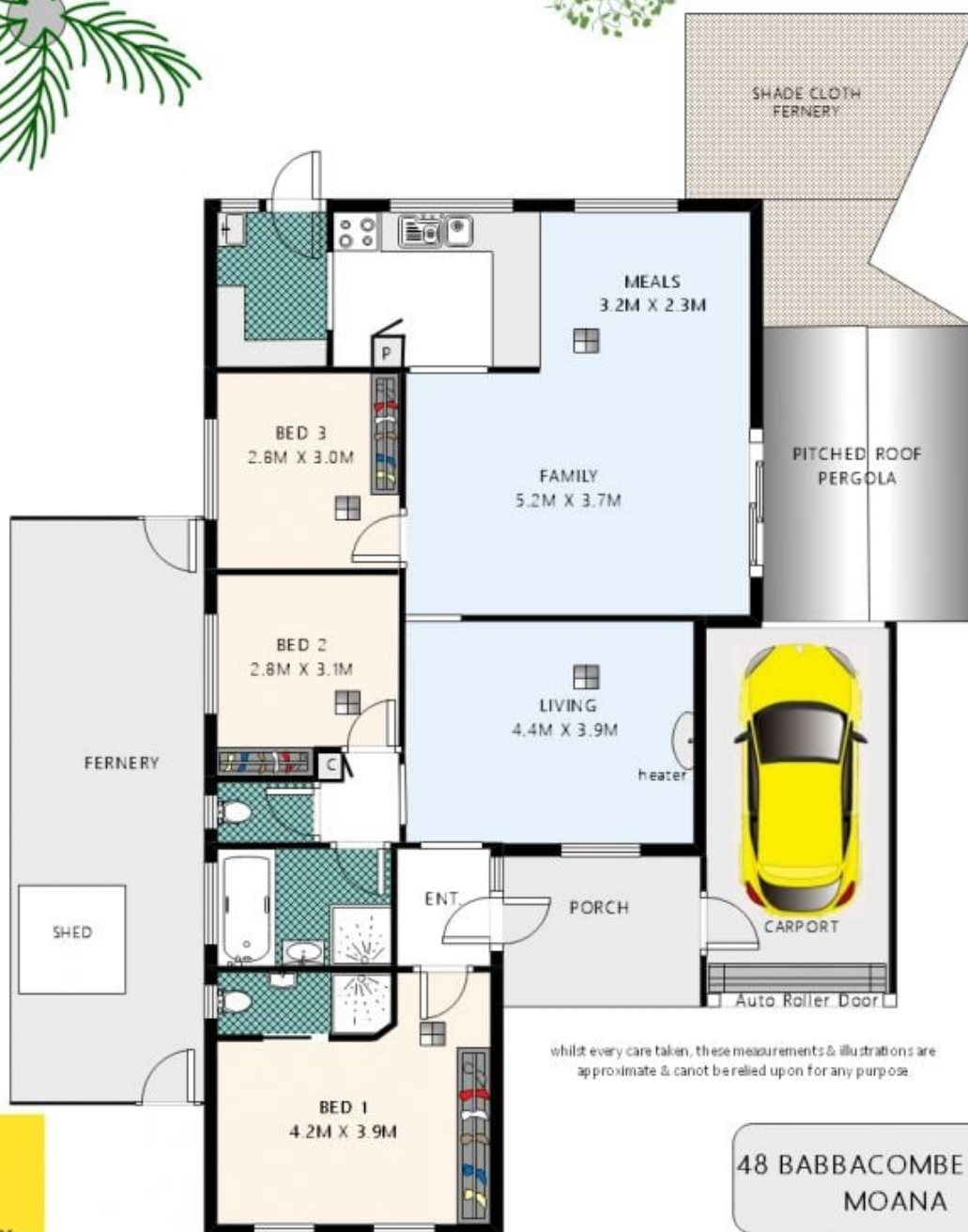
Built in 1993, this lovingly maintained home offers beautiful parquet flooring in the entrance, to the left is the main bedroom and to the right are the remaining bedrooms and living areas. All three bedrooms have built-in robes, the main boasts an ensuite bathroom and the other two have roller shutters on the windows. The family bathroom is neat & tidy with heritage style tiling and has the convenience of

Type : House
Land Size : 615 sqm
View : <https://www.magain.com.au/property/48-babbacombe-drive-moana-sa/8427489>

[For full version visit the website](https://www.magain.com.au/property/48-babbacombe-drive-moana-sa/8427489)

<https://www.magain.com.au>
Magain Real Estate

Shop 2, 32 Saltfleet Street Port Noarlunga SA
08 8382 0029



whilst every care taken, these measurements & illustrations are approximate & cannot be relied upon for any purpose

48 BABBACOMBE DRIVE
MOANA



RayWhite.