

MAGAIN



9 Oceanic Close SEAFORD RISE SA

3 1 1

Located in a peaceful and popular pocket of Seaford Rise, surrounded by other quality properties, is this picture-perfect home that offers charming heritage styling with an established easy-care front garden. This property has great street appeal and would be suitable to a wide range of buyers.

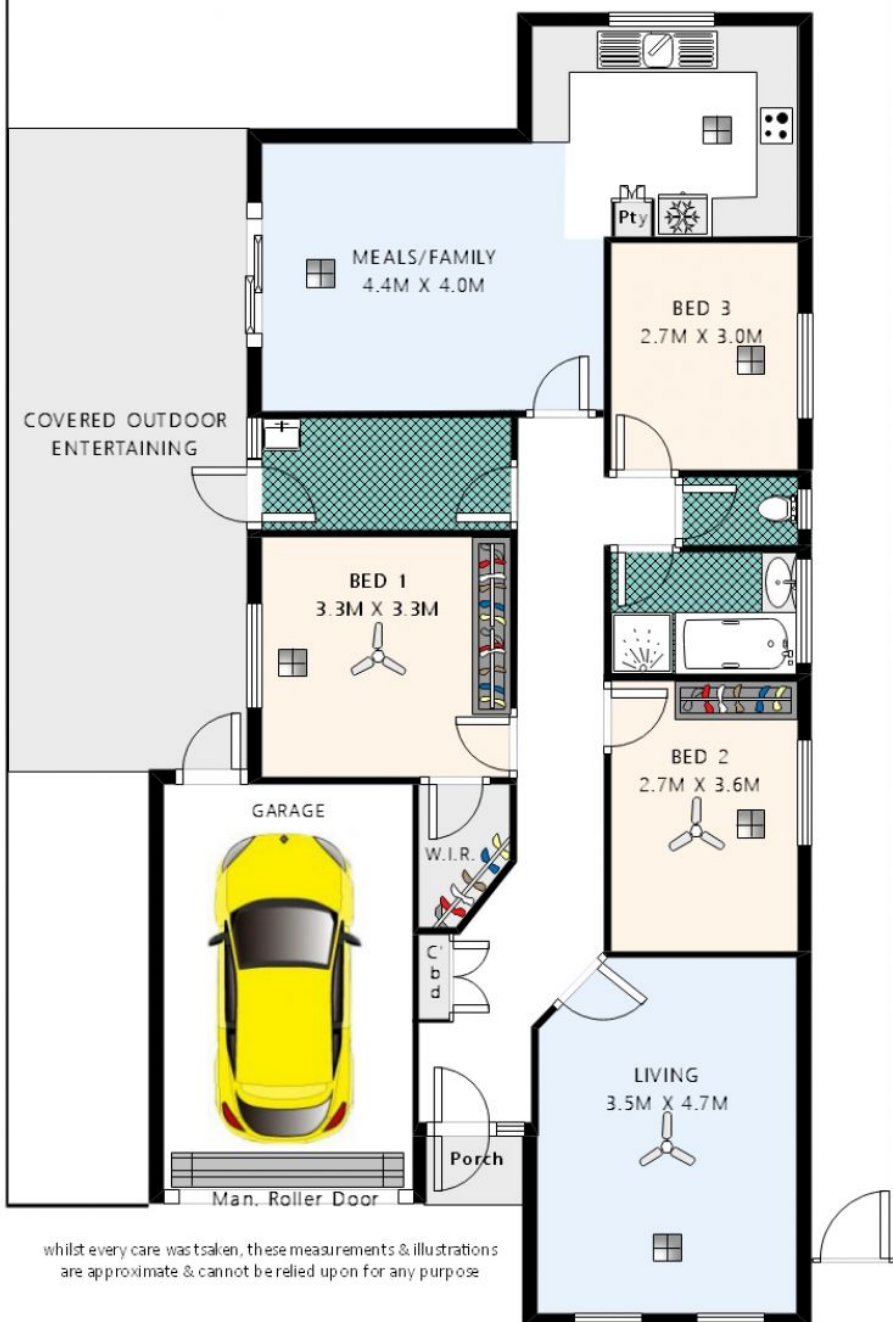
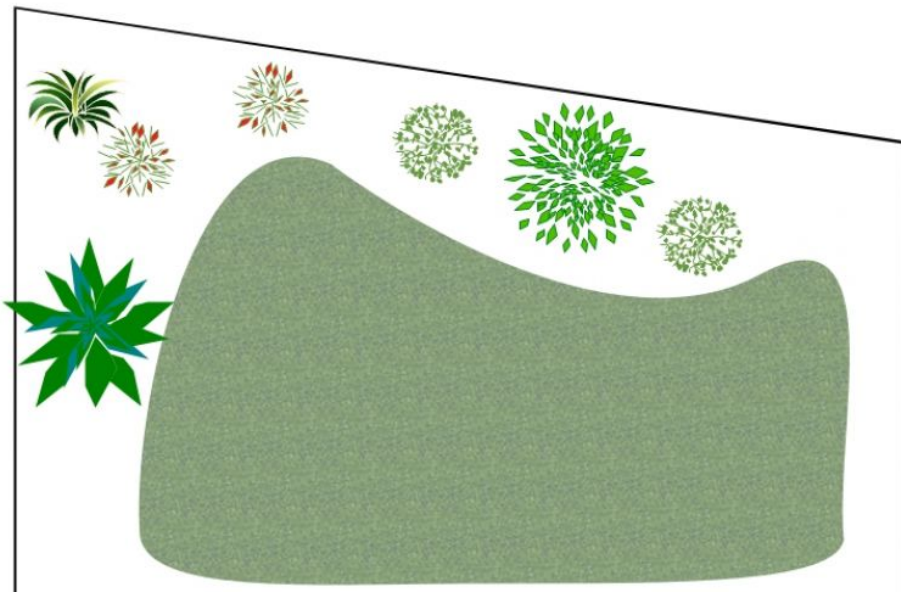
Type : House
Building Size : 13 sqm
Land Size : 364 sqm
View : <https://www.magain.com.au/property/9-oceanic-close-seaford-rise-sa/8427491>

Beautifully presented inside & out, the home features a well-designed floor plan consisting of a separate entrance, two living areas, three bedrooms and a private outdoor entertaining area with low maintenance gardens. The three bedrooms are all a good size, the master boasts a walk-in robe and built-in robe, while bedroom two offers a built-in robe. All the bedrooms are carpeted and centrally located to the neat & tidy bathroom, with the convenience of a

[For full version visit the website](https://www.magain.com.au)

<https://www.magain.com.au>
Magain Real Estate

Shop 2, 32 Saltfleet Street Port Noarlunga SA
08 8382 0029



whilst every care was taken, these measurements & illustrations are approximate & cannot be relied upon for any purpose



9 OCEANIC CLOSE
SEAFORD RISE

