

MAGAIN



6 Sedunary Road MORPHETT VALE SA

3 1 1

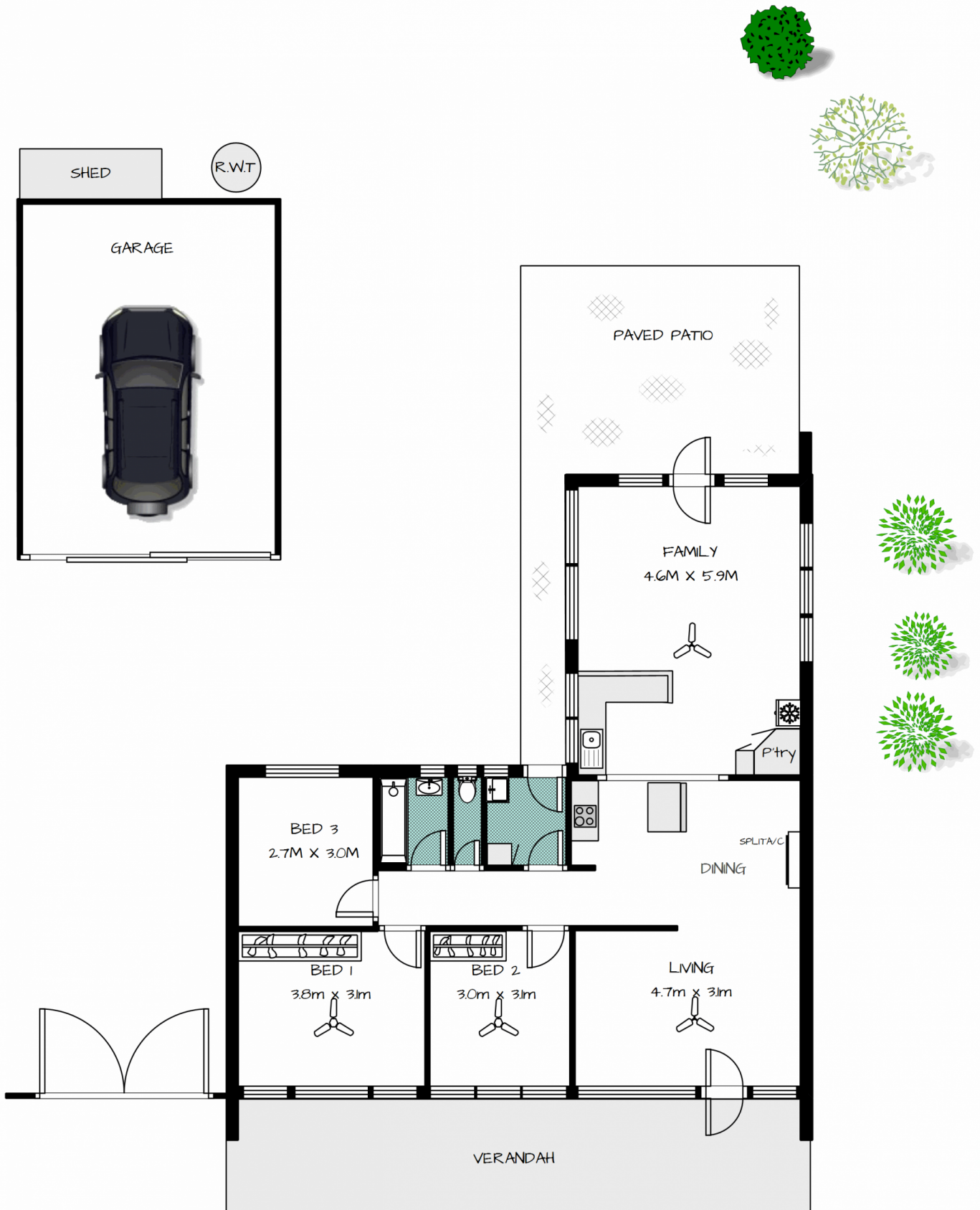
Set on a generous allotment of around 820sqm this home offers a great opportunity for someone to either fix up the home and reap the reward or knock it down and develop the land (stcc).

Type : House

View : <https://www.magain.com.au/property/6-sedunary-road-morphett-vale-sa/8427512>

The home is in need of a little bit of TLC but features three bedrooms two with built in robes & ceiling fans, living area with lovely timber floors & ceiling fan and large open plan kitchen, dine and family room. Updated and spacious, the kitchen boasts stainless steel appliances, large pantry, ample bench space & cupboard storage, island bench with breakfast bar and overlooks into the family room. The family room has plenty of windows that allow the natural light to flow inside the home and access to the backyard. There is a split system air conditioner in the dining area

[For full version visit the website](#)



Ray White
 Port Noarlunga

6 SEDUNARY RD.
 MORPHETT VALE

