

MAGAIN



23 Goulding Grove NOARLUNGA DOWNS SA

3  1  1 

With a range of shops, schools and parks within walking distance, convenient family living doesn't get much better than this. Set on a manageable block and designed with easy-care living in mind, the lucky new owners will enjoy a spacious layout with multiple living zones, covered outdoor entertaining and a low-maintenance yard, perfect for those with kids.

The floor plan comprises of three good size bedrooms - two with built-in robes, an L-shaped lounge/dining offering a reverse cycle air conditioner, central kitchen, bathroom with separate toilet and family room. Set in the heart of the home, the spacious kitchen boasts a 900mm freestanding oven and lots of cupboard storage and connects directly to the meals zone, also overlooking the large family room,

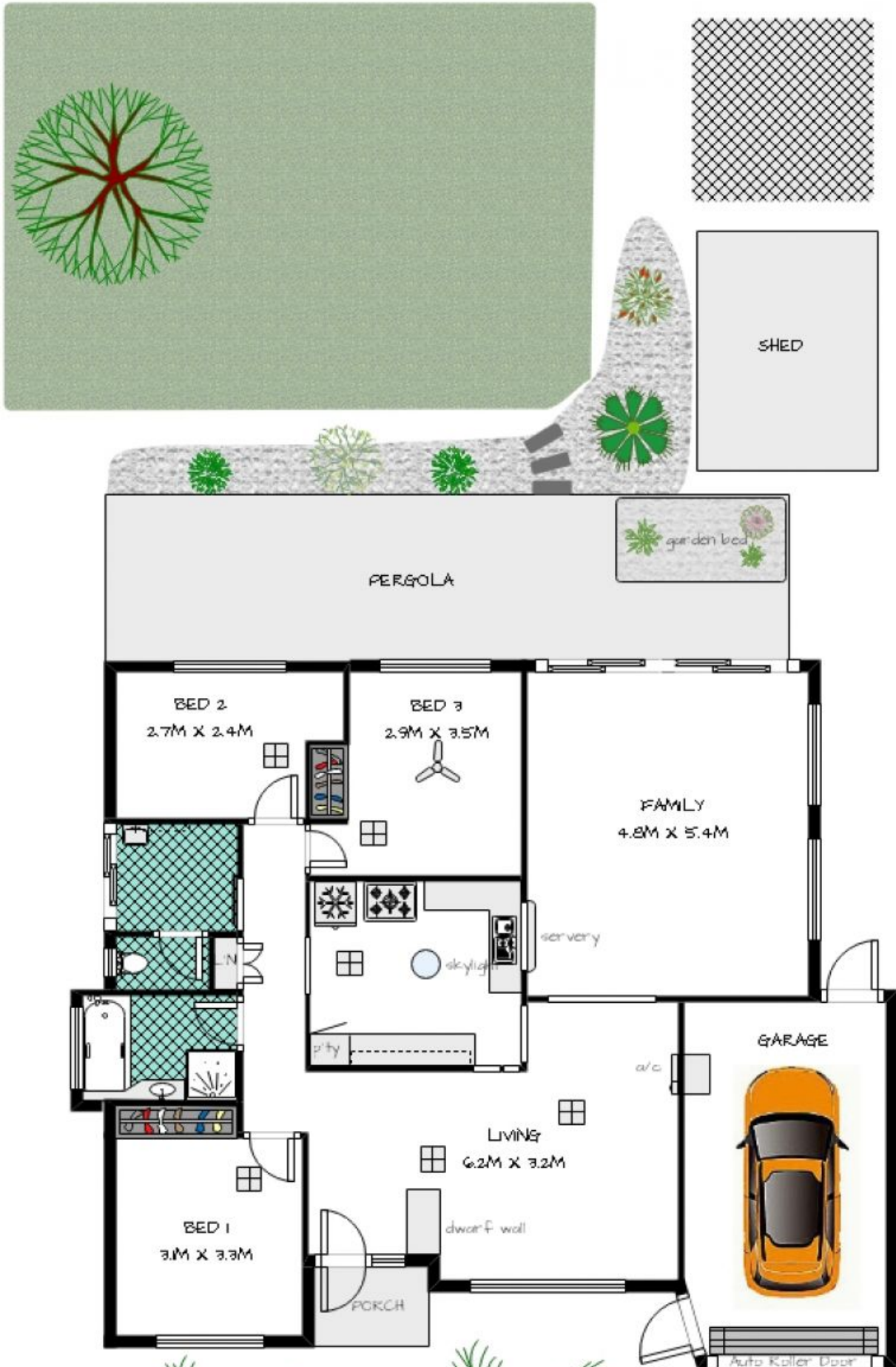
Type : House

View : <https://www.magain.com.au/property/23-goulding-grove-noarlunga-downs-sa/8427544>

[For full version visit the website](https://www.magain.com.au/property/23-goulding-grove-noarlunga-downs-sa/8427544)

<https://www.magain.com.au>
Magain Real Estate

Shop 2, 32 Saltfleet Street Port Noarlunga SA
08 8382 0029



whilst every care was taken, these measurements & illustrations are approximate & cannot be relied upon for any purpose

**23 GOULDING GROVE
NOARLUNGA DOWNS**