

MAGAIN



2 Plimsoll Road SEAFORD SA

3  1  3 

Whether you're looking for your first home where you can fix it up and add some value or you're a developer looking for your next site to build multiple homes (stcc), this wonderfully located home represents a great opportunity.

Type : House

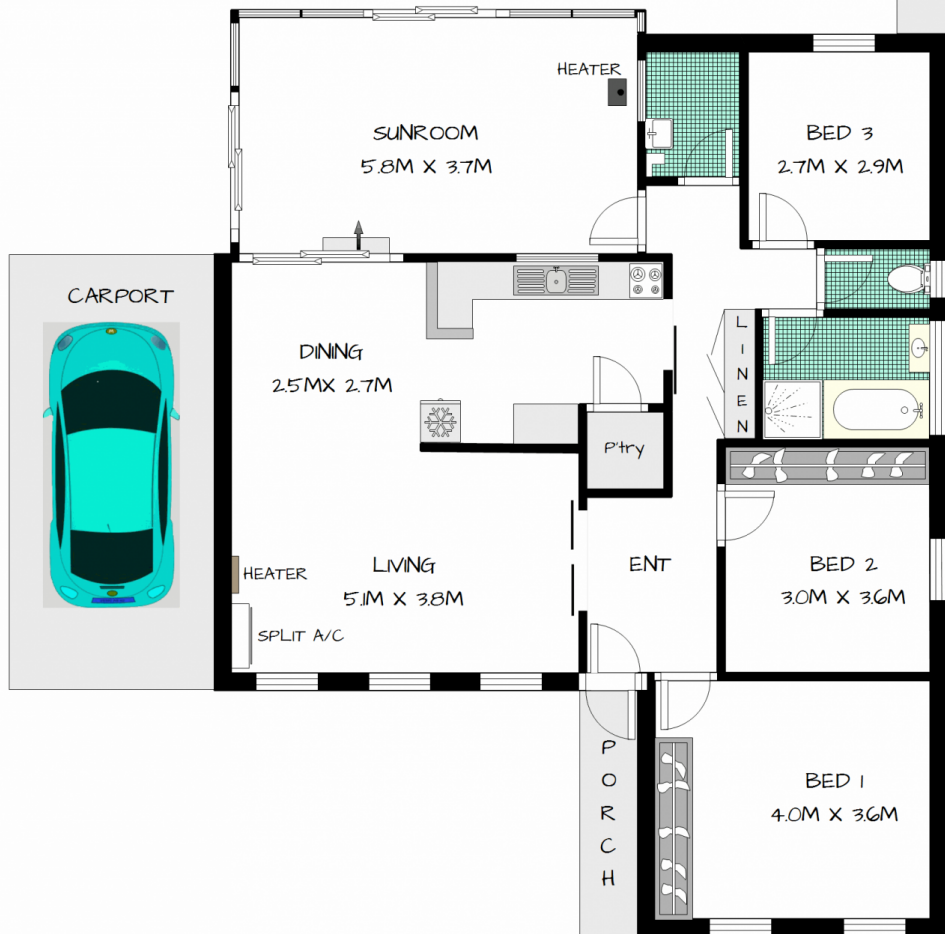
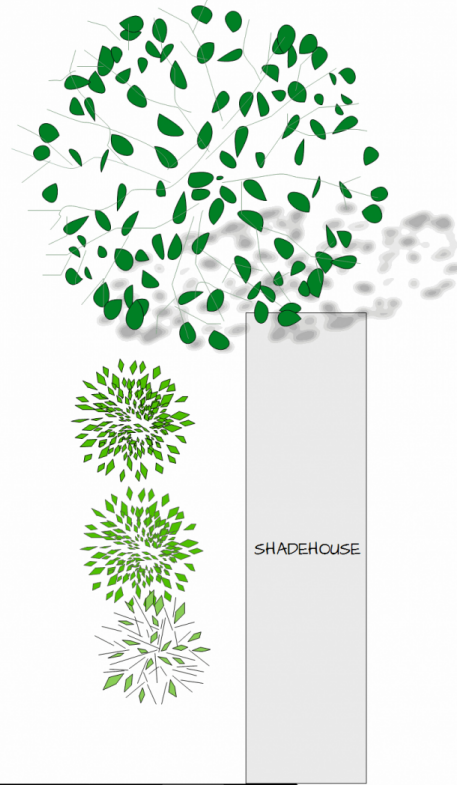
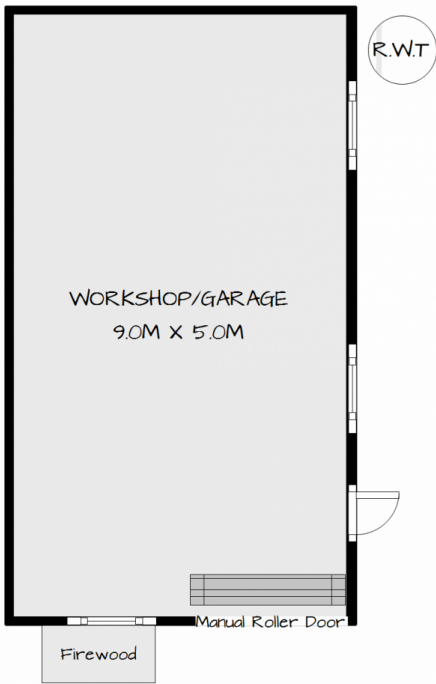
View : <https://www.magain.com.au/property/2-plimsoll-road-seaford-sa/8427547>

Built in 1977 on a fully fenced corner block, the home features a large entrance hall, three bedrooms - two with built-in robes, a spacious L-shaped living/dining area, functional kitchen and a sunroom. The tiled kitchen offers a large walk-in pantry & dishwasher, while the updated bathroom has the convenience of a separate toilet. Families will love the extra space the sunroom gives; the large windows capture the sunlight and create a relaxing outlook over the rear garden. Additional features of this home include heating & cooling in the living area, a wood

[For full version visit the website](#)

<https://www.magain.com.au>
Magain Real Estate

Shop 2, 32 Saltfleet Street Port Noarlunga SA
08 8382 0029



Ray White
Port Noarlunga

whilst every care was taken these measurements & illustrations are approximate & cannot be relied upon for any purpose

2 PLIMSOLL ROAD
SEAFORD

