

MAGAIN



19 Tiller Drive SEAFORD SA

3  1  2 

This great family home situated in the beautiful seaside suburb of Seaford is located within close proximity to the Seaford Shopping Centre & Beach Hotel, good schools and transport links via the Southern Expressway or the Seaford Rail Line. Only a short stroll gets you to the beach and directly opposite is a huge reserve with playground facilities offering a variety of entertainment options for all the family.

Built in 1973 and lovingly cared for by the current owners, it's the little things that make it stand out from the rest, such as the Contemporary design with Cathedral ceilings and the large rooms with picture windows. Featuring a formal entrance, three generous sized bedrooms - built-in robe to master, a gorgeous hard wood timber kitchen surrounded by a large formal living area on one side and a huge formal

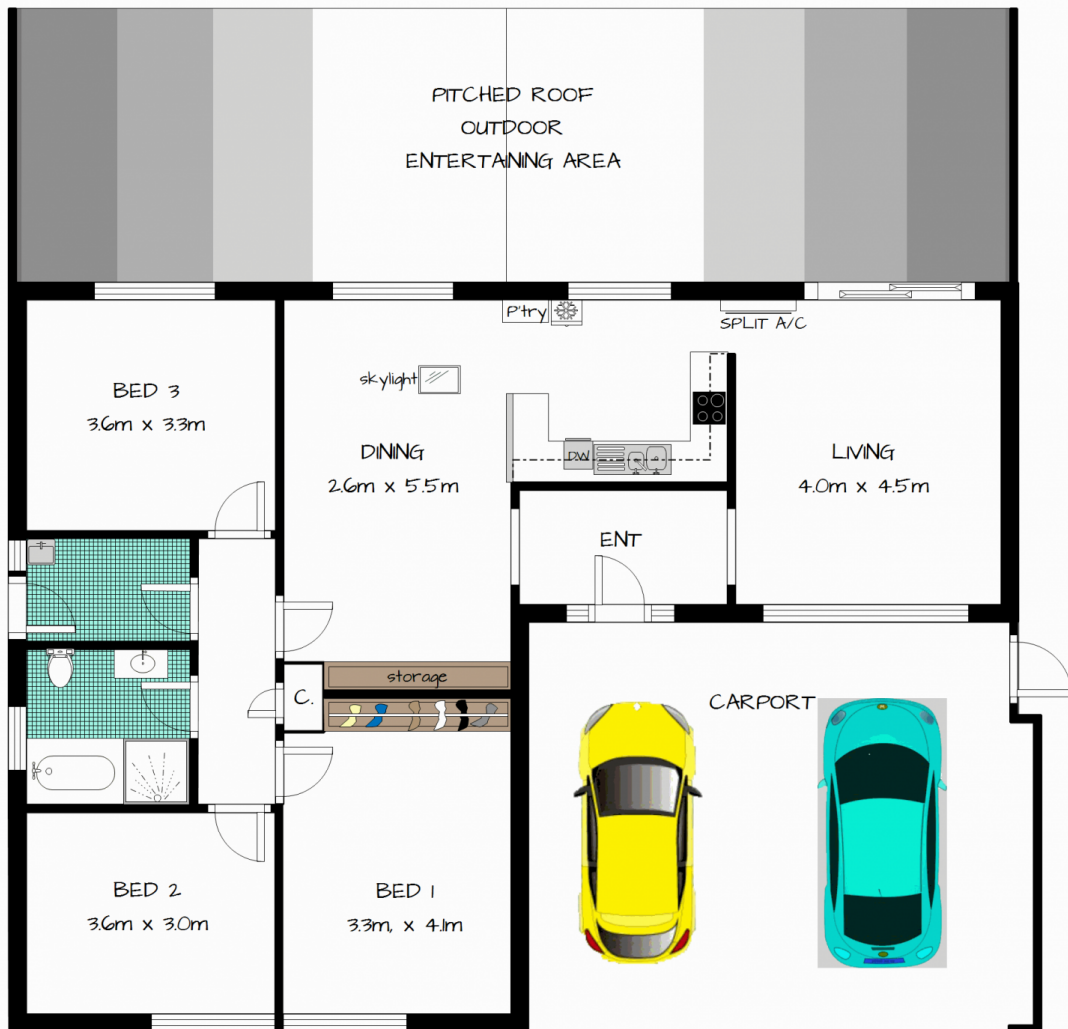
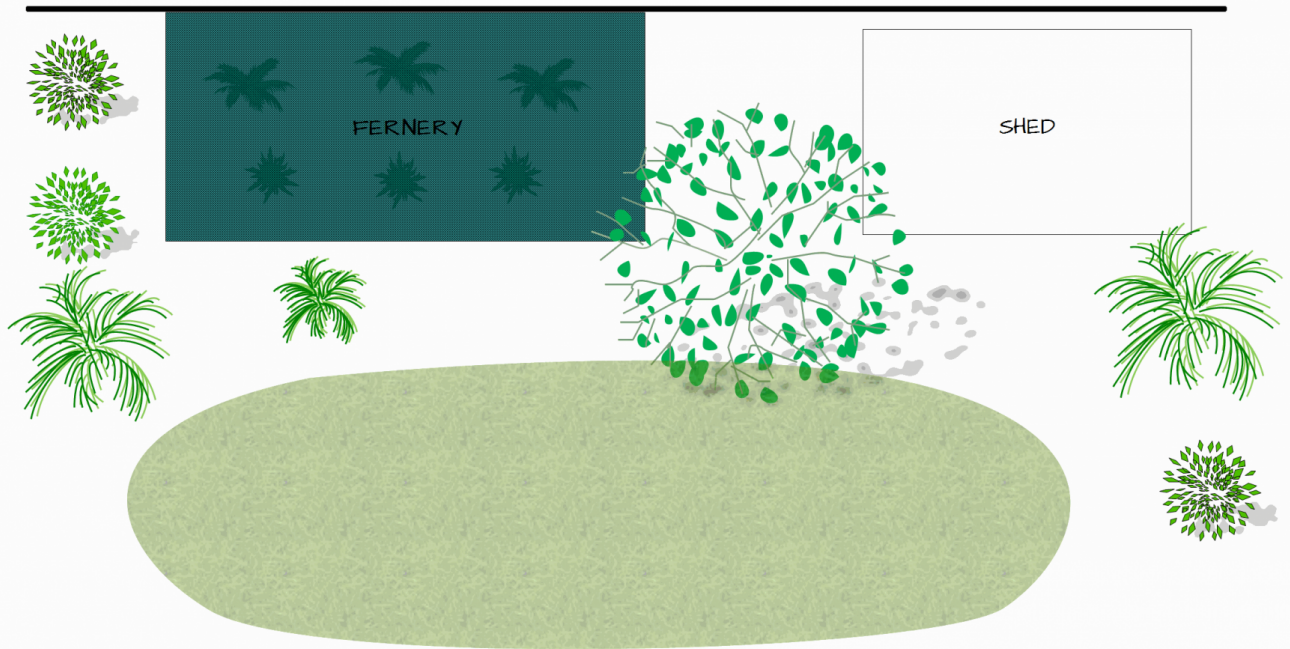
Type : House

View : <https://www.magain.com.au/property/19-tiller-drive-seaford-sa/8427551>

[For full version visit the website](https://www.magain.com.au)

<https://www.magain.com.au>
Magain Real Estate

Shop 2, 32 Saltfleet Street Port Noarlunga SA
08 8382 0029



Ray White
Port Noarlunga

whilst every care was taken, these measurements & illustrations are approximate & cannot be relied upon

19 TILLER DRIVE
SEAFORD

