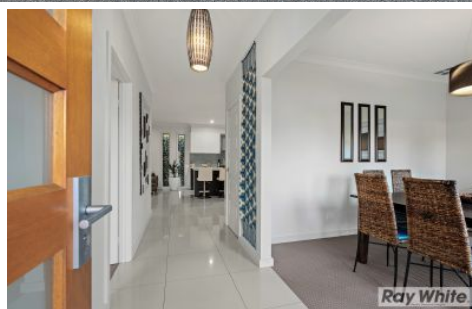





MAGAIN



6 Petersen Crescent PORT NOARLUNGA SA

4  2  2 

This beautifully presented home epitomises what modern day living is all about, with a demanding street presence, jaw dropping interiors and a fabulous location. Set over two levels and designed to accommodate family living with low maintenance gardens, multiple entertaining areas and four generous sized bedrooms..welcome home!

Type : House

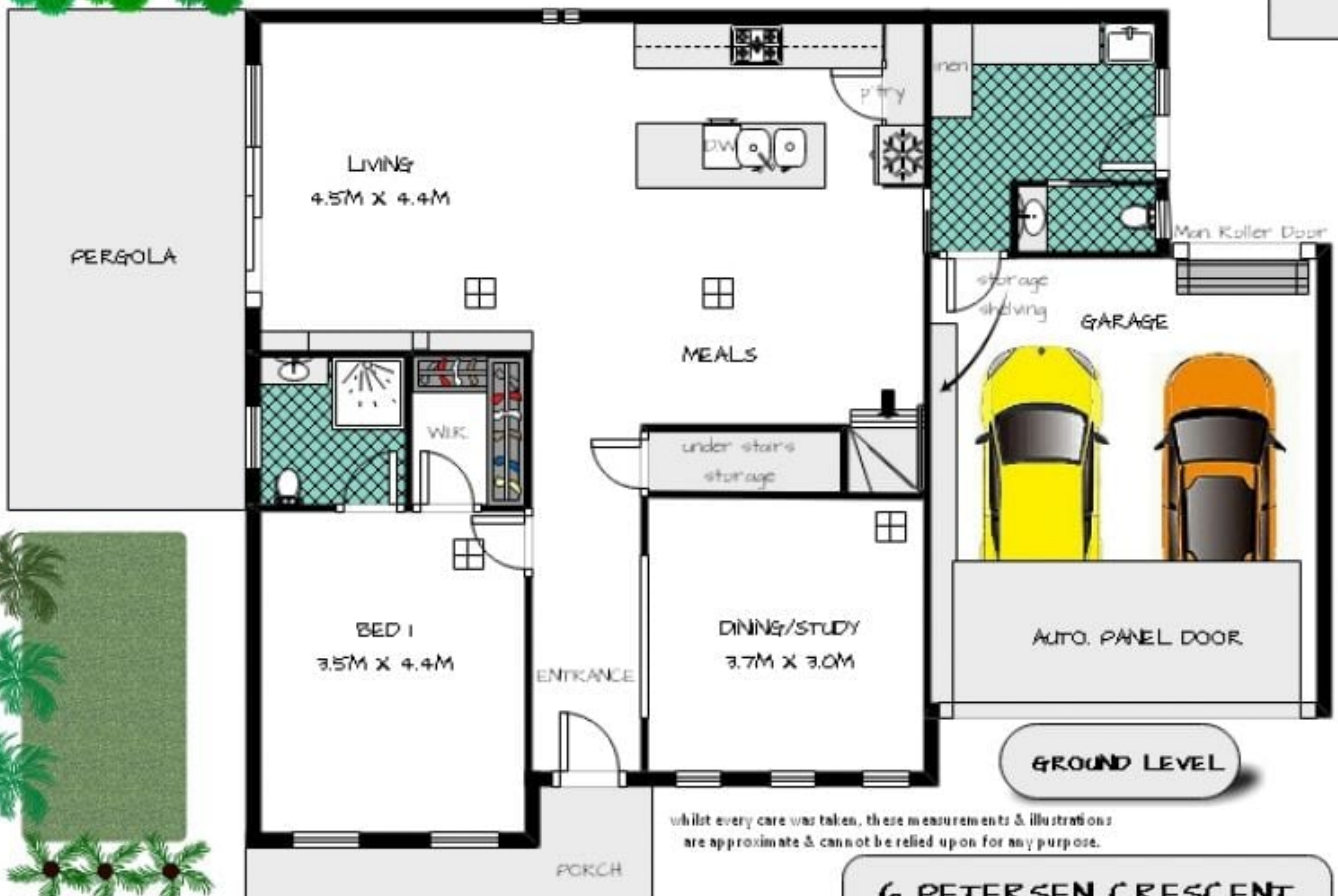
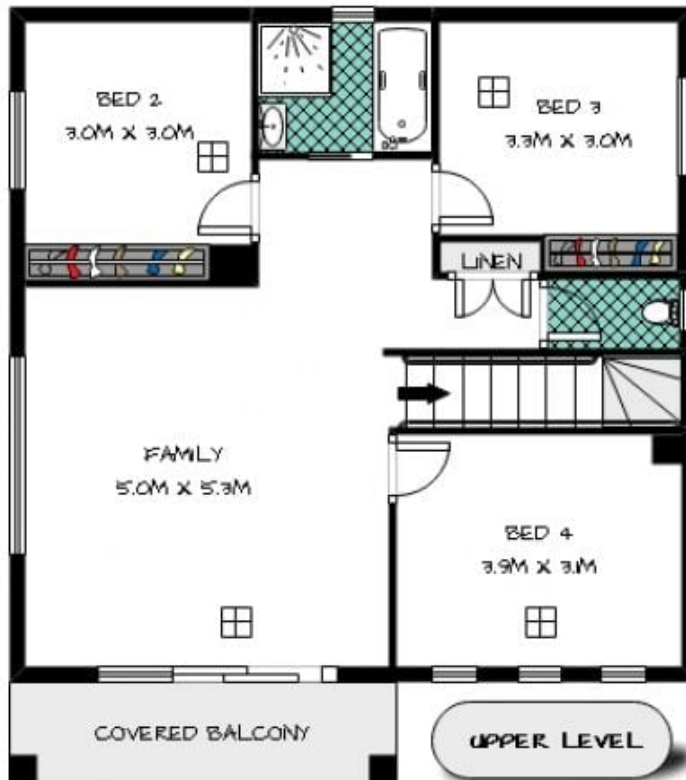
View : <https://www.magain.com.au/property/6-petersen-crescent-port-noarlunga-sa/8427555>

Designed & built in 2014 with uncompromised quality throughout, you will be the envy of all your friends. The expansive and light filled open plan kitchen, meals & living area flow seamlessly and open to the alfresco entertaining space, the ideal spaces for those who love to entertain and perfect for day-to-day living. The gourmet kitchen boasts stainless steel appliances including 900mm freestanding gas cooker & electric oven, rangehood and dishwasher,

[For full version visit the website](#)

<https://www.magain.com.au>
Magain Real Estate

Shop 2, 32 Saltfleet Street Port Noarlunga SA
08 8382 0029



whilst every care was taken, these measurements & illustrations
 are approximate & cannot be relied upon for any purpose.

**6 PETERSEN CRESCENT
 PORT NOARLUNGA**

Ray White.
 Port Noarlunga