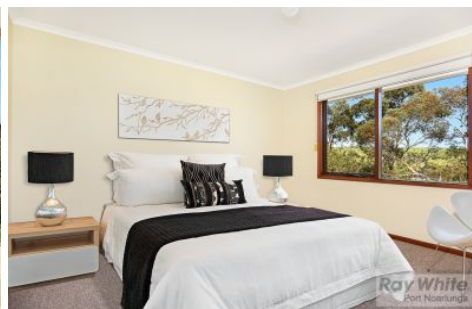


# MAGAIN



## 654 Brodie Road HUNTFIELD HEIGHTS SA

3  1 

Check out the View from every front room of the home. Set on a full size allotment of approximately 700 square metres, overlooking paddock next door with a beautiful backdrop of the Onkaparinga Hills. You might actually think you are buying a home in the country.

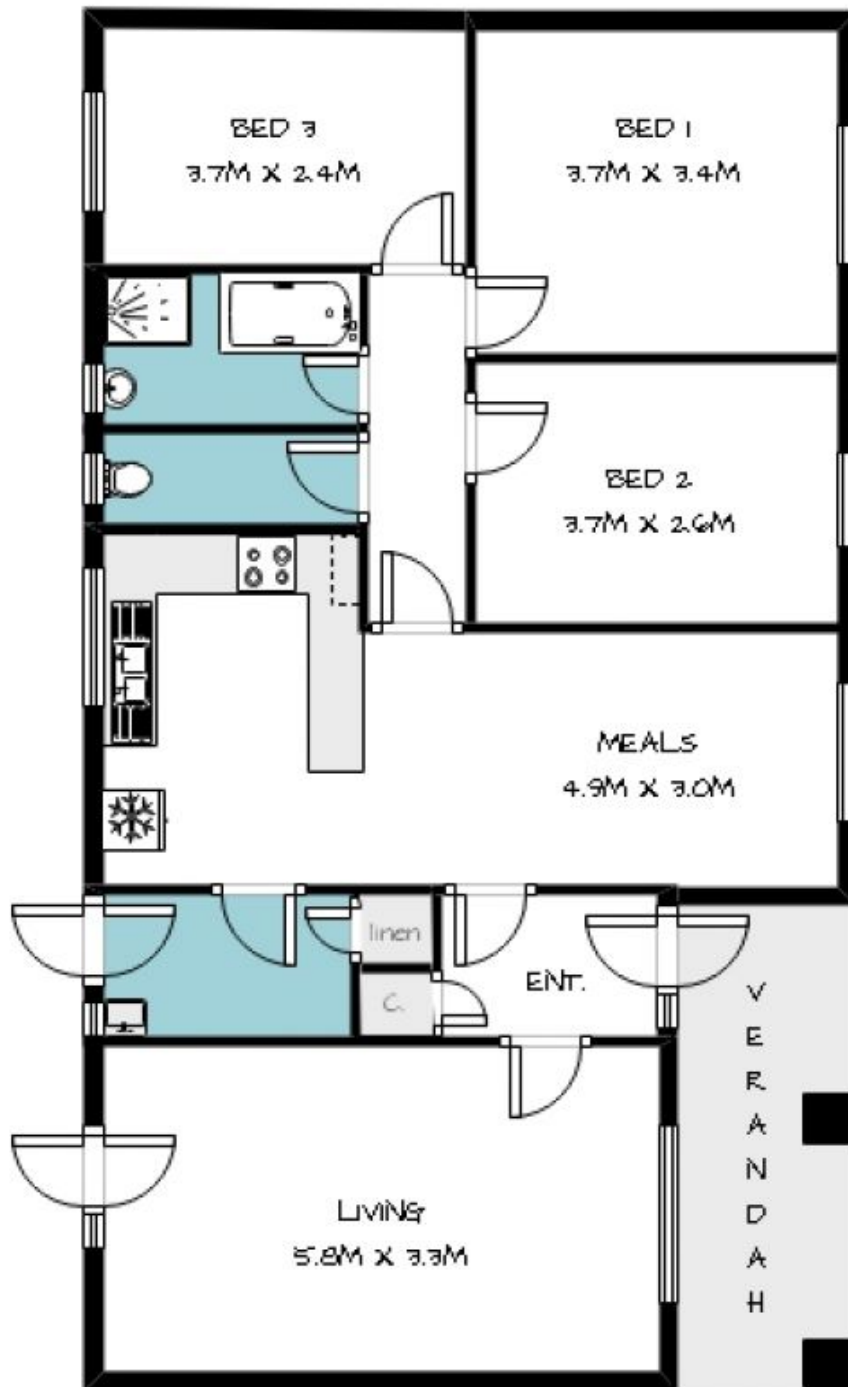
The entire home is clean and neatly presented awaiting your personal touch. Two of the three good size bedrooms, open plan kitchen/dine and living room all enjoy the rural aspect with large windows to overlook the neighbouring paddock bordered by established gum trees and a picturesque view every day.

The large yard is landscaped with enough room for added improvements and perfect for young children, pets &

[For full version visit the website](https://www.magain.com.au/property/654-brodie-road-huntfield-heights-sa/8427590)

**Type** : House

**View** : <https://www.magain.com.au/property/654-brodie-road-huntfield-heights-sa/8427590>



**Ray White**  
Port Noarlunga

whilst every care was taken,  
these measurements &  
illustrations are approximate  
therefore they cannot nor  
should not be relied upon

654 BRODIE ROAD  
HUNTFIELD HEIGHTS

