

MAGAIN



46 Pimpala Road MORPHETT VALE SA

3 2 1

All the boxes are ticked on this modern Torrens Titled residence, situated on a courtyard block of around 360m² and offering an excellent opportunity for first home buyers, people looking to downsize or those wanting to invest in this sought-after location.

Type : House

Price : \$ 335,000

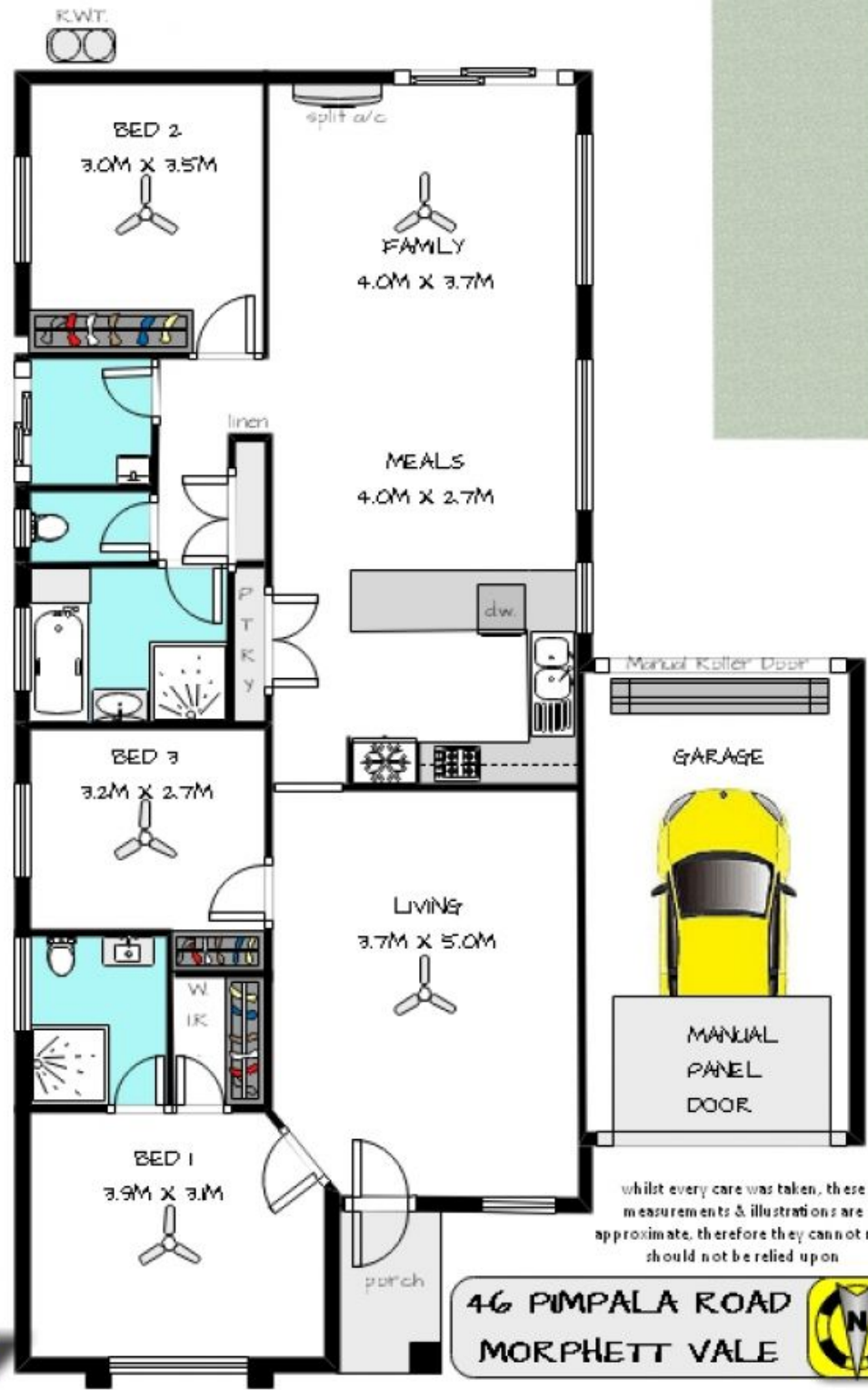
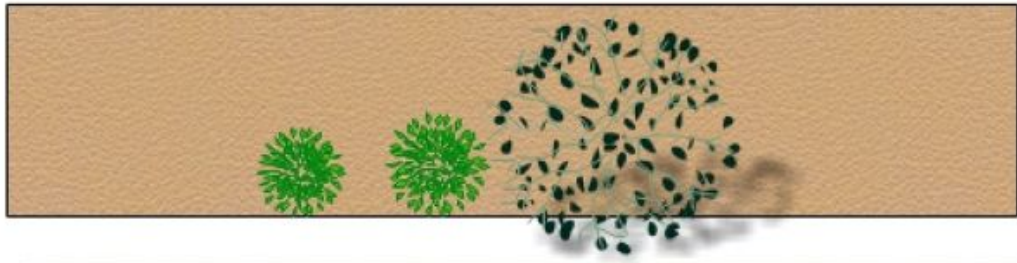
View : <https://www.magain.com.au/property/46-pimpala-road-morphett-vale-sa/8427593>

From the moment you step inside number Forty Six Pimpala Road it is truly evident the care that the current owners have taken to maintain the quality and style on offer. The large, tiled open plan kitchen, meals and family room is filled with natural light from the large picture windows. With plenty of bench and cupboard space, stainless steel appliances and a breakfast bar the kitchen caters for all. From here, the living area flows outside to the paved entertaining area, overlooking the easy-care

[For full version visit the website](https://www.magain.com.au)

<https://www.magain.com.au>
Magain Real Estate

Shop 2, 32 Saltfleet Street Port Noarlunga SA
08 8382 0029



whilst every care was taken, these measurements & illustrations are approximate, therefore they cannot nor should not be relied upon

Ray White
Port Noarlunga

46 PIMPALA ROAD
MORPHETT VALE

