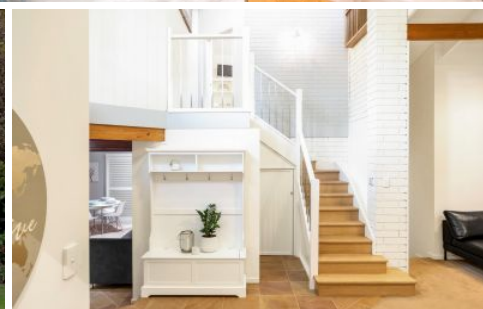


# MAGAIN



84 Birman Crescent FLAGSTAFF HILL SA

4  2  2 

Be impressed by this extensively refurbished four bedroom architecturally designed home, with direct golf course access and picturesque views down the fairway.

The aspirational suburb of Flagstaff Hill offers a warm country community feel with the convenience of being only 16kms from Adelaide CBD and being close to Universities, shopping precincts and popular beaches.

Features of the property include:

Living room with feature combustion heater and vaulted ceilings.

Separate family room and dining area with views over the garden and golf course beyond.

Recently renovated Jag Kitchen with white stone bench

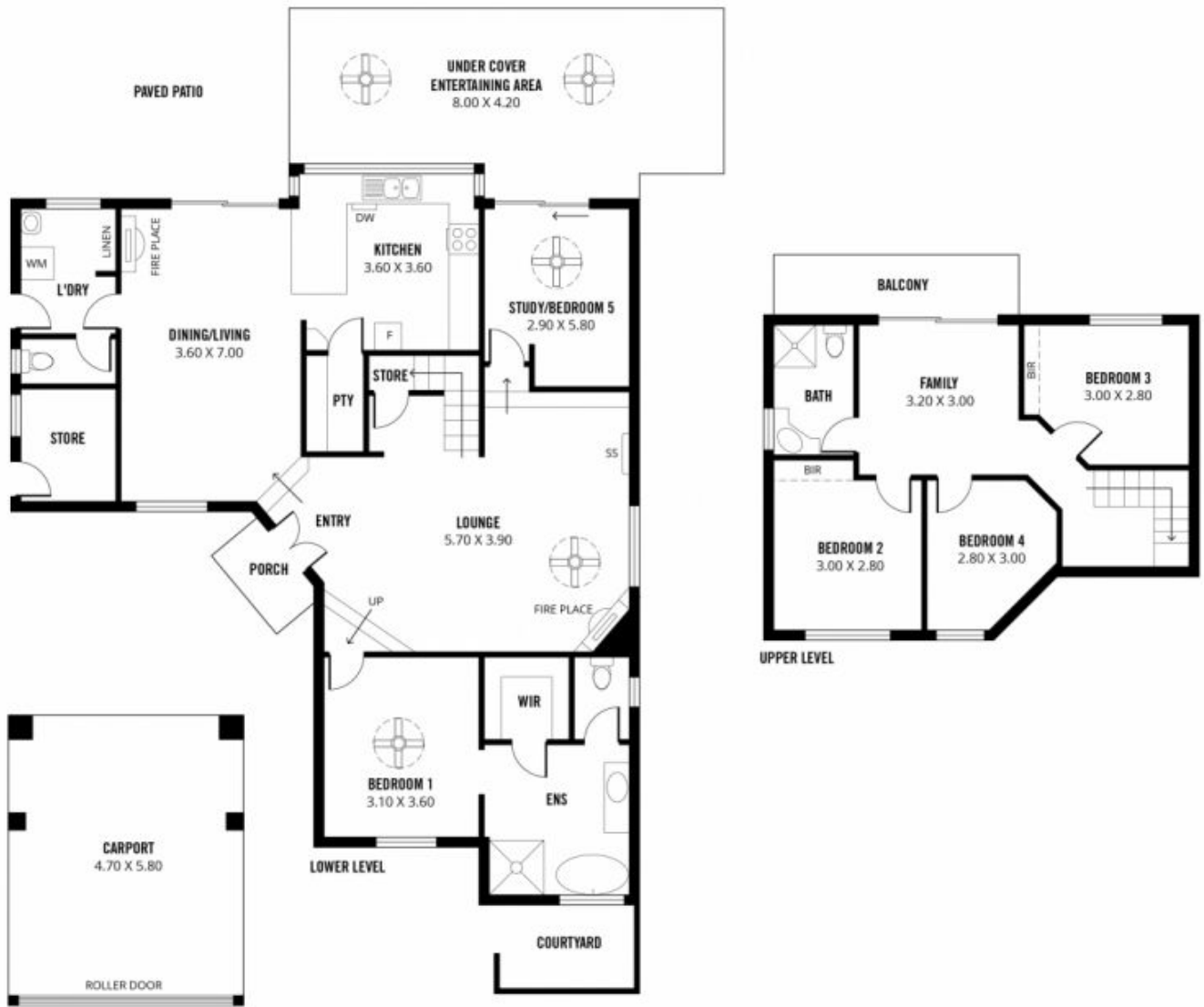
**Type** : House

**View** : <https://www.magain.com.au/property/84-birman-crescent-flagstaff-hill-sa/8427602>

[For full version visit the website](https://www.magain.com.au)

<https://www.magain.com.au>  
Magain Real Estate

Shop 2, 32 Saltfleet Street Port Noarlunga SA  
08 8382 0029



- 246m<sup>2</sup>

**TOTAL**
- 182m<sup>2</sup>

Living
- 6m<sup>2</sup>

Balcony
- 27m<sup>2</sup>

Carport
- 2m<sup>2</sup>

Porch
- 29m<sup>2</sup>

Under Cover  
Entertaining Area



Scale in metres. This drawing is for illustration purposes only. All measurements are approximate and details intended to be relied upon should be independently verified.

Produced by **The Fotobase Group**