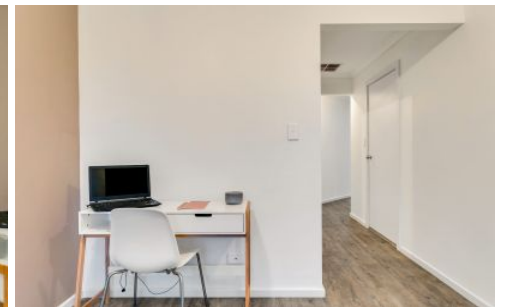


# MAGAIN



## 94 Lynton Terrace SEAFORD SA

3 2 2

Situated opposite a reserve, on an attractive street and located within walking distance to shops and Seaford train station. Seaford is a popular suburb and nestled between Port Noarlunga with its vibrant cafe culture, a variety of restaurants and the premier wine region of McLaren Vale.

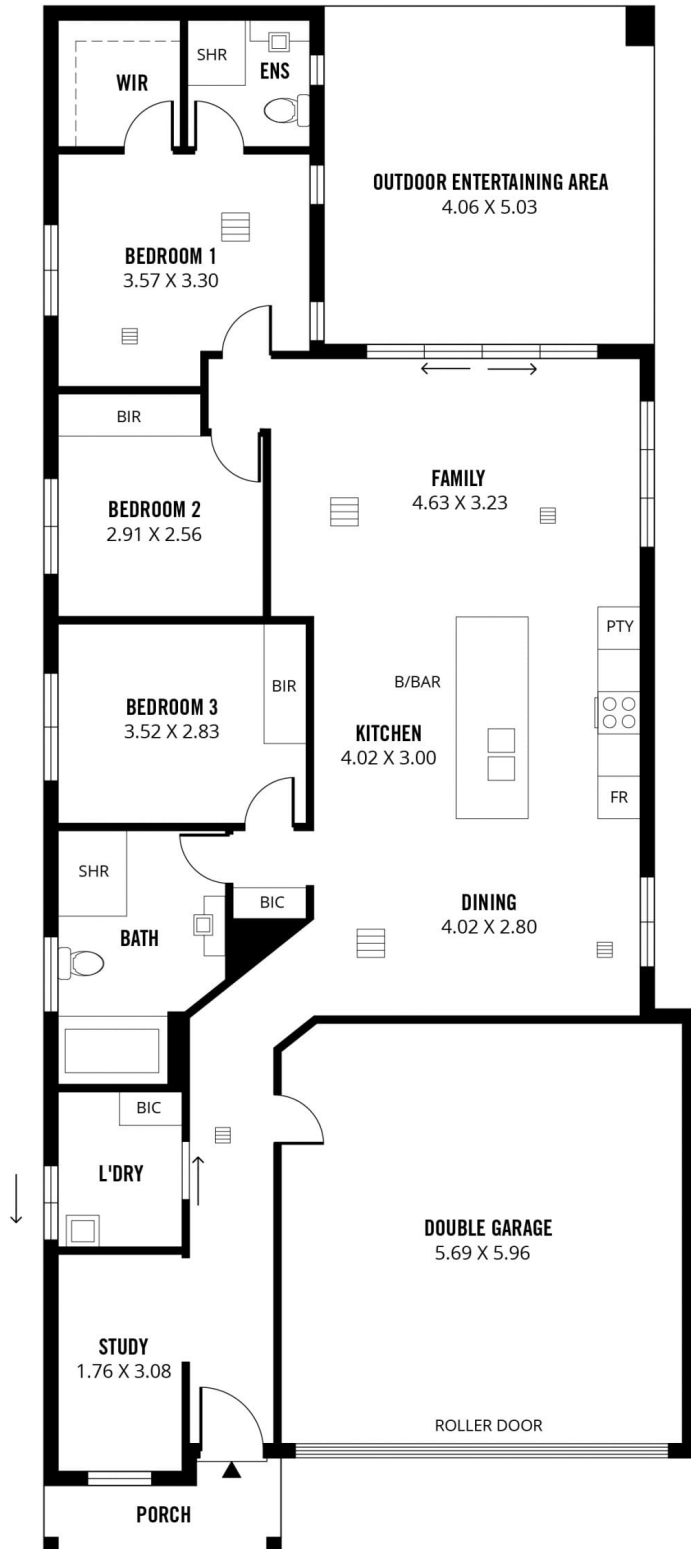
If you enjoy an active outdoor lifestyle you can fish, kayak or paddle board up the nearby Onkaparinga river, or venture in to the ocean for surfing, body boarding or snorkeling.

This stylish single storey property is only 4 years old and is finished to a high specification. Features include the following:

**Type** : House

**View** : <https://www.magain.com.au/property/94-lynton-terrace-seaford-sa/8427610>

[For full version visit the website](https://www.magain.com.au)



**180m<sup>2</sup>**

**TOTAL**

123m<sup>2</sup>

Living

4m<sup>2</sup>

Porch

33m<sup>2</sup>

Garage

20m<sup>2</sup>

Outdoor  
Entertaining



Scale in metres. This drawing is for illustration purposes only. All measurements are approximate and details intended to be relied upon should be independently verified.

Produced by **The Fotobase Group**