

MAGAIN



Unit 13/60 Booth Avenue MORPHETT VALE SA

2 1 1

This fantastic two-bedroom unit is ideally situated close to local shops including Southgate Square Shopping Centre, quality schools, public transport, access to the southern expressway and much more. It is a must see for first home buyers, downsizers or those seeking a superb investment opportunity.

Built in 1976 of solid double brick construction, this beautifully presented unit has been freshly painted throughout. Comprising of a spacious living area with easy-care floating timber flooring, a split system air conditioner, ceiling fan and a North facing window that allows plenty of natural light to fill the room. The updated kitchen is modern and features gas cook-top, electric oven, ample cupboard storage and overlooks into the meals area.

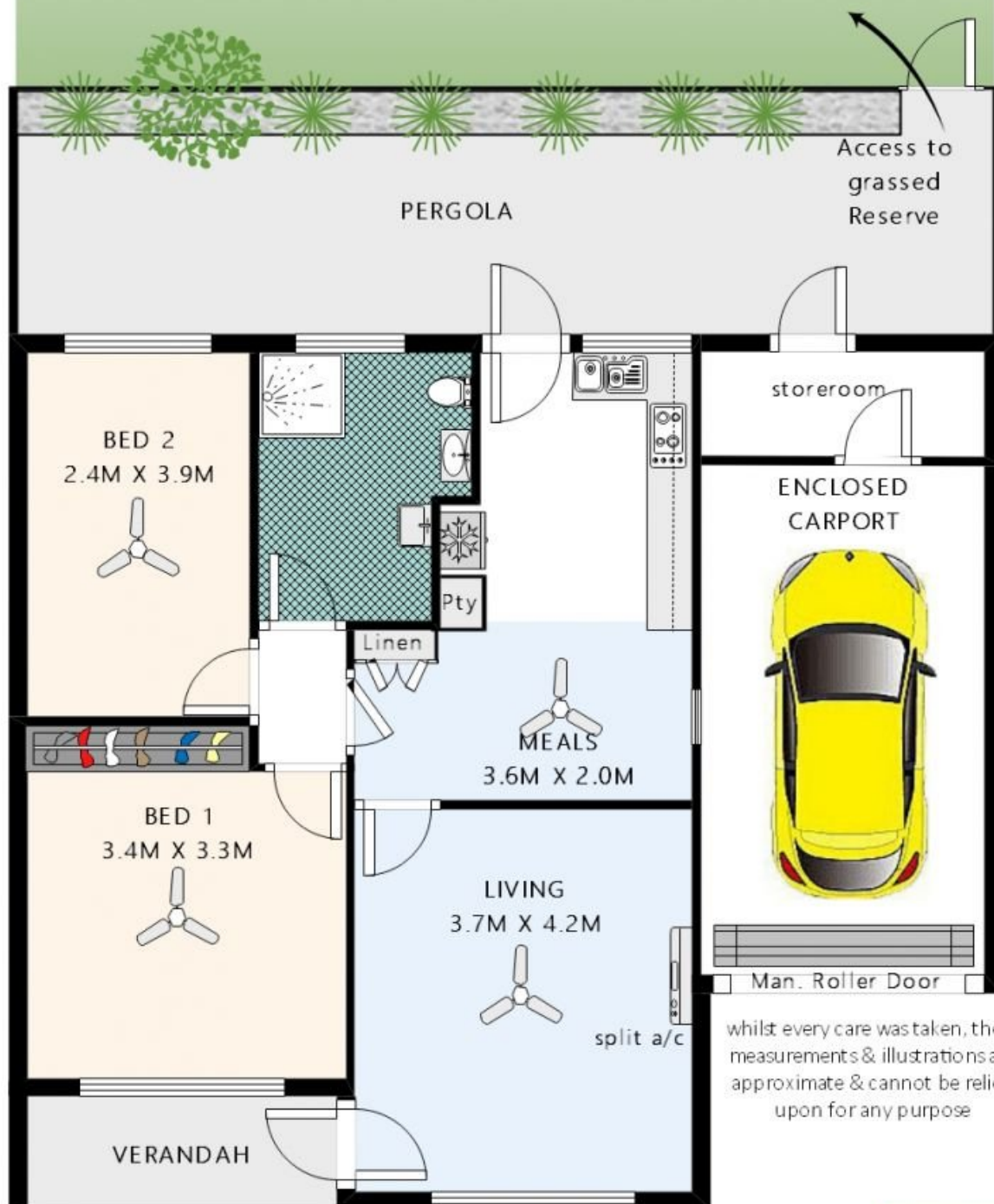
Type : Unit

View : <https://www.magain.com.au/property/unit-1360-booth-avenue-morphett-vale-sa/8427642>

[For full version visit the website](https://www.magain.com.au)

<https://www.magain.com.au>
Magain Real Estate

Shop 2, 32 Saltfleet Street Port Noarlunga SA
08 8382 0029



whilst every care was taken, these measurements & illustrations are approximate & cannot be relied upon for any purpose

UNIT 13-60 BOOTH AVENUE
MORPHETT VALE

RayWhite.