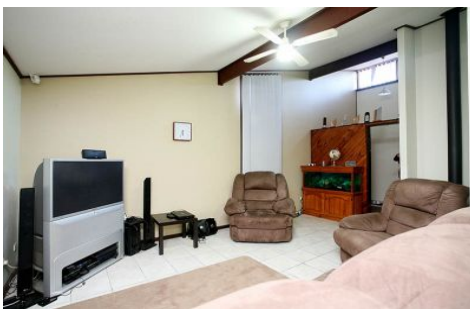


MAGAIN



136 Murray Road PORT NOARLUNGA SA

3  1  2 

Situated on approx 690m² of land offering sea views with the possibility of future subdivision (stcc) is this private & secure seaside home.

Features include three bedrooms ? all with built-in robes & ceiling fans, I-shape lounge/dine with gas ?wood look? heater & reverse cycle wall air conditioner, kitchen with adjoining family room & updated bathroom with separate toilet.

Outside offers double carport with roller doors, covered entertaining area, powered workshop, garden shed and plenty of backyard for the family to enjoy.

With a fantastic tenant in place this makes an immediate

[For full version visit the website](#)

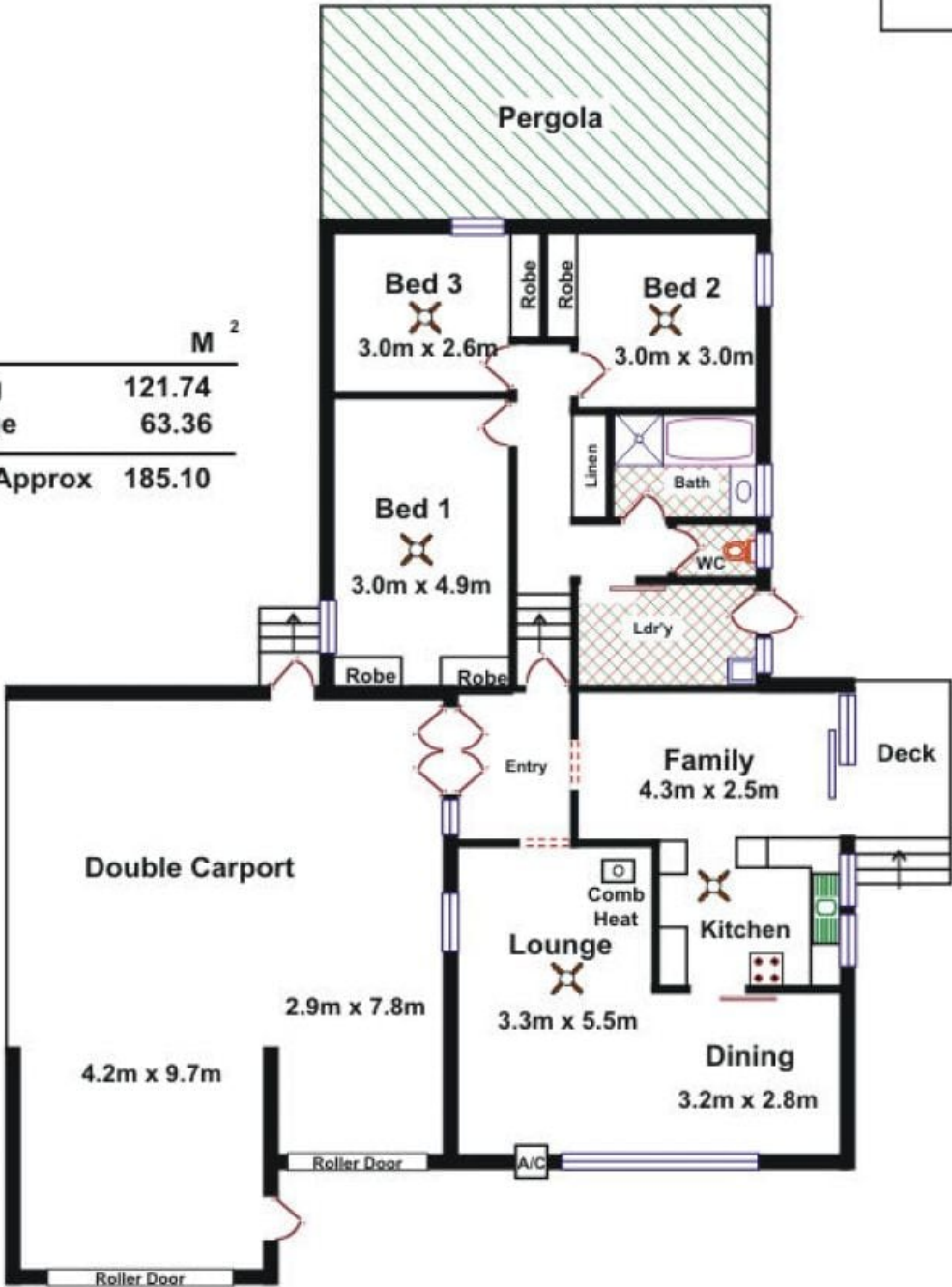
Type : House

View : <https://www.magain.com.au/property/136-murray-road-port-noarlunga-sa/8427670>

Shed

Shed
3.4m x 6.1m

Area	M ²
Living	121.74
Garage	63.36
Total Approx	185.10



Please Note: Every care has been taken to verify the correctness of the areas and details used in this leaflet. No warranty or representation is given or made as to the correctness of the information supplied and neither the owners, illustrator nor the Agents can accept responsibility for errors or omissions. The sketch is for illustration purposes only and intending purchasers should satisfy themselves independently regarding sizes, layout and location of the property. Please check with local council that all structures are approved by council.