

MAGAIN



9 Marrington Circuit MORPHETT VALE SA

3 2 4

Beautifully appointed, this lovely family home is situated on one of Morphett Vale's finest streets and is ideally located just moments from local schools and shops.

Type : House

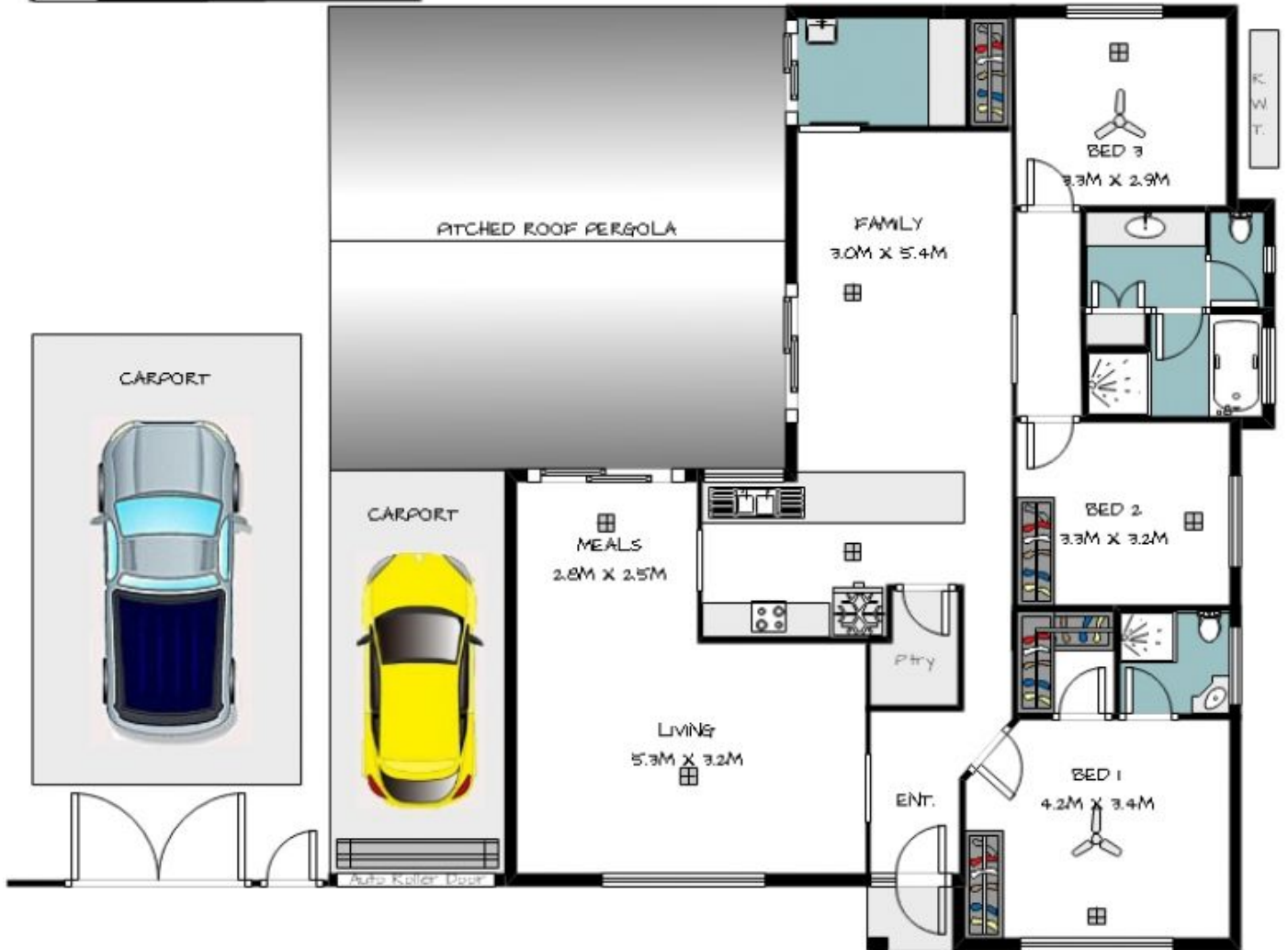
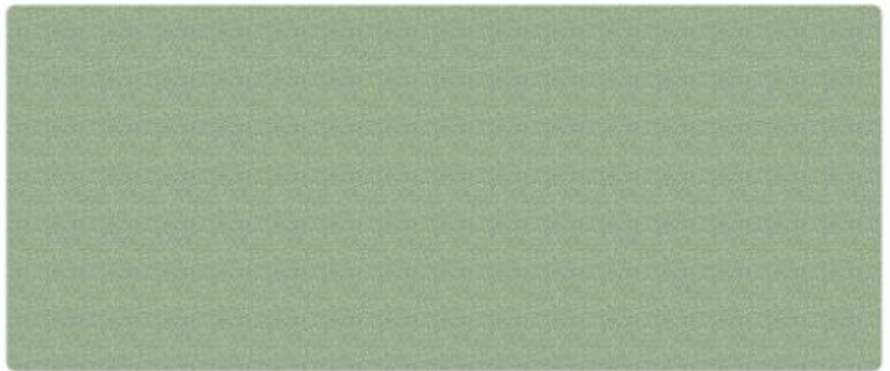
View : <https://www.magain.com.au/property/9-marrington-circuit-morphett-vale-sa/8427699>

Offering great street appeal from the moment you arrive and once inside you will be impressed by the presentation and the functional floorplan. Features include a separate entry hall, three bedrooms - main with walk-in robe & ensuite bathroom, spacious L-shape lounge & dine with access to the rear yard. The other two bedrooms are a good size, and both are close to the popular three-way bathroom. Centrally located, the galley kitchen boasts a walk-in pantry, freestanding oven and a breakfast bar, while the tiled family room blends nicely with the outdoors. Additional features include ducted & zoned reverse cycle

[For full version visit the website](#)

<https://www.magain.com.au>
Magain Real Estate

Shop 2, 32 Saltfleet Street Port Noarlunga SA
08 8382 0029



Ray White.
Port Noarlunga

Whilst every care was taken, these measurements & illustrations are approximate there they cannot nor should not be relied upon.

9 MARRINGTON CIRCUIT
MORPHETT VALE

