

MAGAIN



28 Erebus Glen HALLETT COVE SA

3 2 2

Specifically created to offer superior comfort for any family, this spacious home immediately impresses with its clean lines, open spaces and warm character.

The sizable master bedroom includes a walk in robe, ensuite complete with his & hers hand basins. Bedrooms two & three feature built in robes and are serviced by the central family bathroom with a full size bath. The well proportioned open plan family area combines a kitchen with quality stainless steel appliances, including dishwasher, gas cooking, vast pantry and an island breakfast bar.

Once outside, through the large sliding doors from the family room, you are greeted with a serene paved courtyard and entertaining area with peaceful views over

Type : House

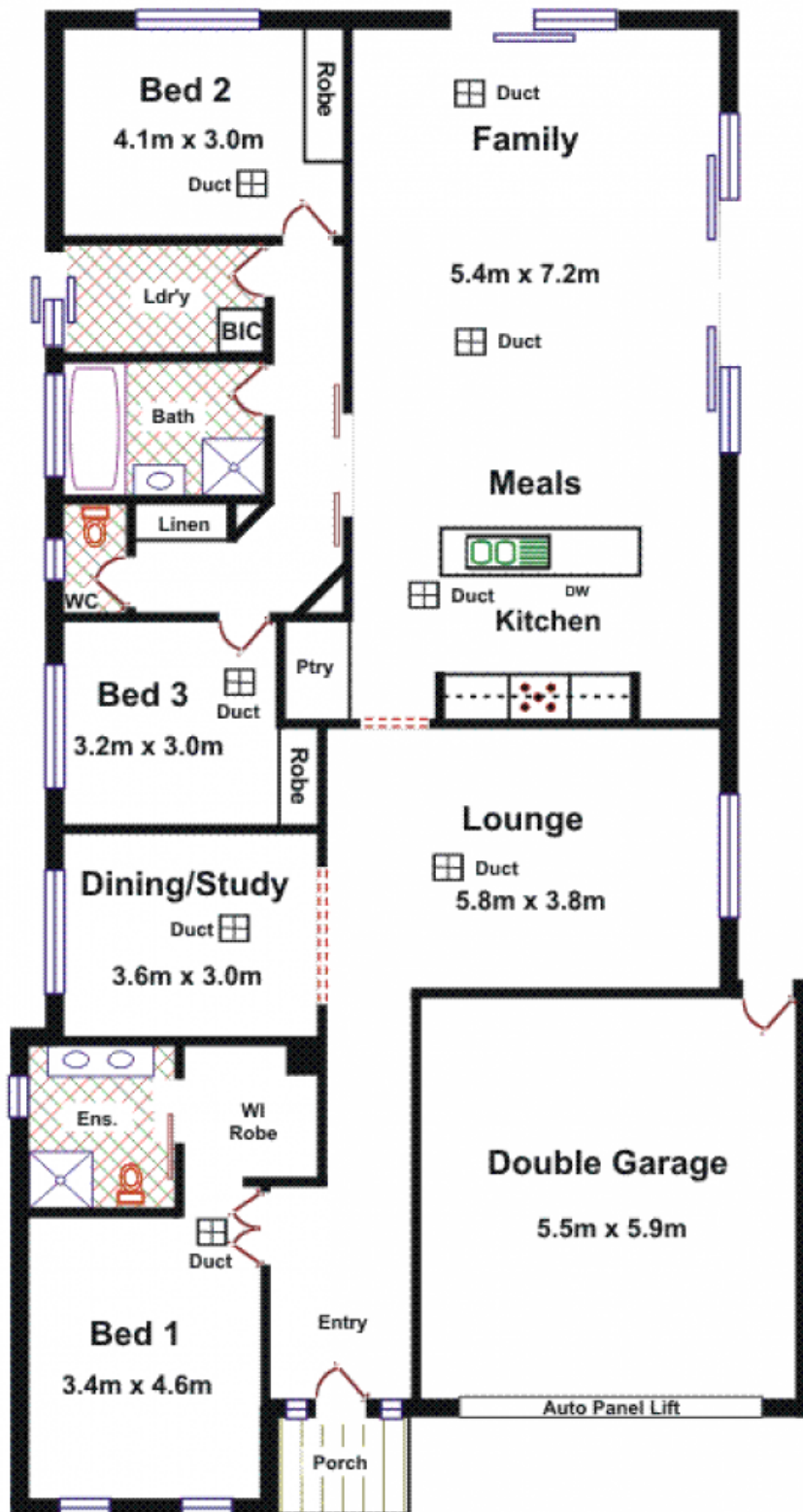
View : <https://www.magain.com.au/property/28-erebus-glen-hallett-cove-sa/8427705>

[For full version visit the website](https://www.magain.com.au)

<https://www.magain.com.au>
Magain Real Estate

Shop 2, 32 Saltfleet Street Port Noarlunga SA
08 8382 0029

Area	M ²
Living	186.28
Garage	35.16
Porch	2.79
Total Approx	224.23



Please Note: Every care has been taken to verify the correctness of the areas and details used in this leaflet. No warranty or representation is given or made as to the correctness of the information supplied and neither the owners, illustrator nor the Agents can accept responsibility for errors or omissions. The sketch is for illustration purposes only and intending purchasers should satisfy themselves independently regarding sizes, layout and location of the property. Please check with local council that all structures are approved by council.