

MAGAIN



Unit 6/60 Booth Avenue MORPHETT VALE SA

2  1  1 

Built in 1976 a solid brick and well designed compact two bedroom unit is ideally located close to South Gate Plaza Shopping Centre offering a supermarket and a range of speciality shops, public transport routes and the infamous Junk Food Corner.

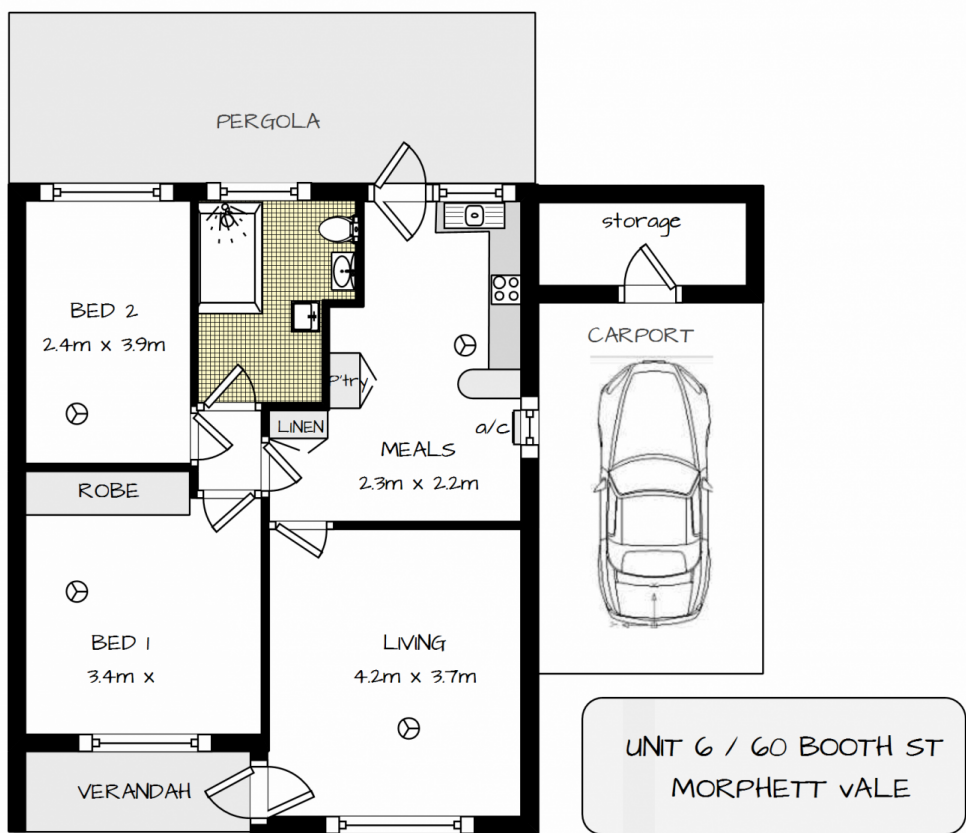
Type : House

View : <https://www.magain.com.au/property/unit-660-booth-avenue-morphett-vale-sa/8427792>

From the front verandah enter into the good size formal lounge, double windows allows light into the room making the space bright and airy. Adjacent is the kitchen and dining room, the kitchen has a pantry and island bench with storage underneath.

The main bedroom is a good size also with a double window and boasts a built in robe, the second bedroom is a reasonable size featuring a large wall mural. These

[For full version visit the website](#)



whilst all care is taken these measurements are approximate and must not be relied on