

MAGAIN



15 Sonar Court SEAFORD RISE SA

3 2 1

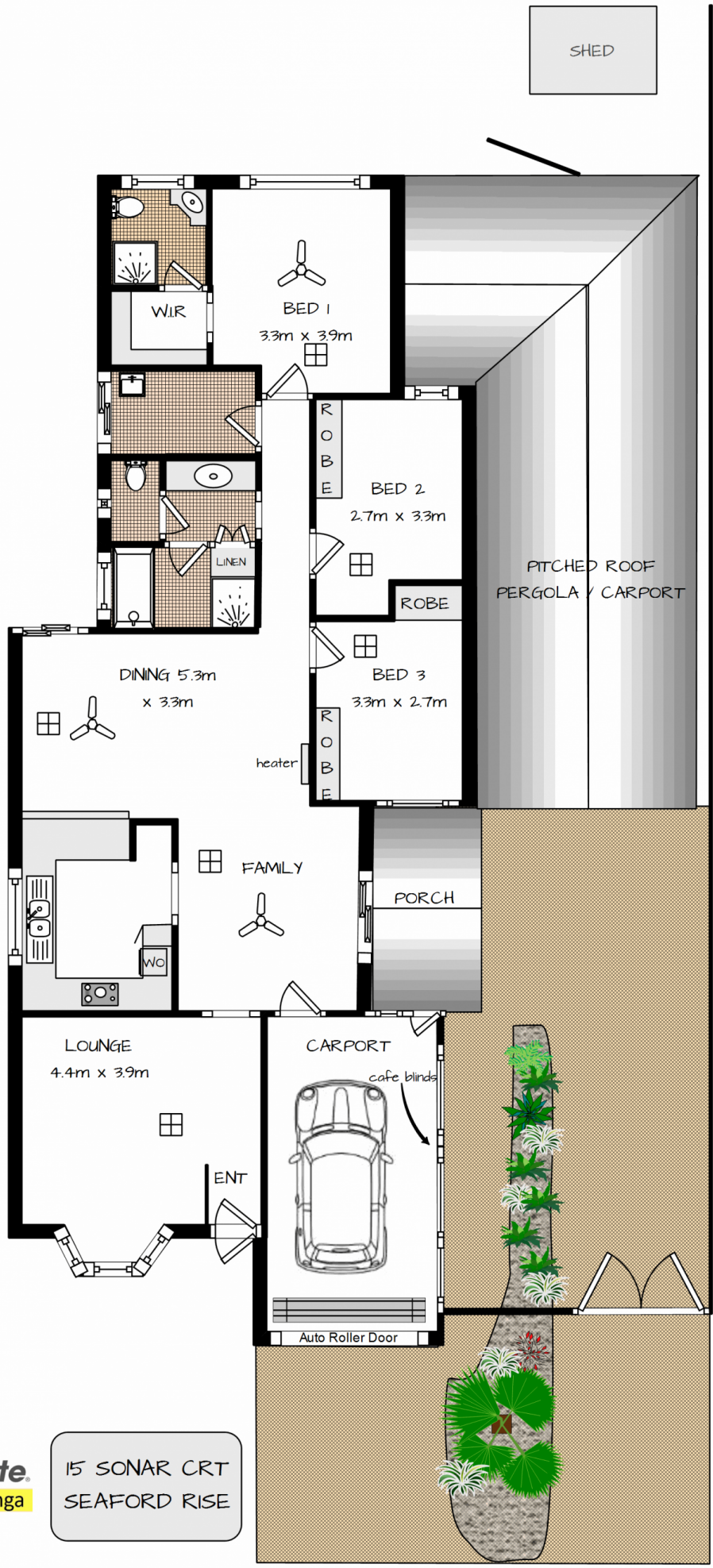
Ideally positioned in a quiet and peaceful cul-de-sac amongst other quality homes, with Seaford Rail Line and Southern Expressway, Seaford Shopping Centre, and schools in close proximity. The beautiful southern beaches of Port Noarlunga and Moana, the wine region of McLaren Vale are just a short drive.

Type : House

View : <https://www.magain.com.au/property/15-sonar-court-seaford-rise-sa/8427805>

A well-presented villa with neutral decor offers a carpeted formal lounge with gorgeous bay window overlooking the front garden. From the entry, easy care timber look vinyl floors continue through to the open plan living with two sets of double glass sliding doors and windows to create a bright and light space. The functional kitchen boasts ample storage cupboards, wall oven, gas hotplates and range hood. The large island bench has been utilised to create a

[For full version visit the website](#)



Ray White
Port Noarlunga

15 SONAR CRT
SEAFORD RISE



whilst every care is taken
these measurements are
approximate and must be
considered as such