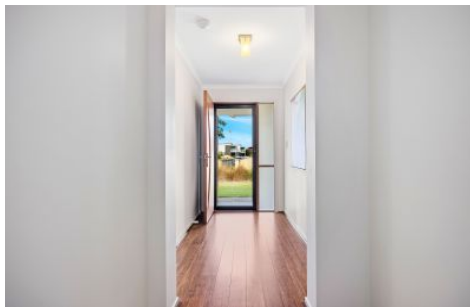


# MAGAIN



## 46 South Pacific Drive Seaford Meadows SA

3 2 2

Situated in the highly sought-after area of Seaford Meadows, this beautifully presented home offers a life of ease and comfort to those who call it home. All the room you need to move, play and entertain is on offer in the spacious and well-designed single-storey layout while outside, the expansive pergola and spacious backyard offer endless hours of fun in a location that is sure to impress.

Arriving at the property you'll be greeted by a neat and tidy facade plus low-maintenance gardens. Step inside to discover a spacious and flexible layout, tastefully designed that can grow with you as your needs change. Offering three bedrooms, the master is nestled at the front of the home, complete with a walk-in robe and an ensuite with a toilet, shower and vanity. The other two bedrooms both

**Type** : House  
**Price** : \$ 622,000  
**Land Size** : 594 sqm  
**View** : <https://www.magain.com.au/property/46-south-pacific-drive-seaford-meadows-sa/8427873>

[For full version visit the website](https://www.magain.com.au)



Scale in metres. This drawing is for illustration purposes only. All measurements are approximate and details intended to be relied upon should be independently verified.

Produced by **The Fotobase Group**