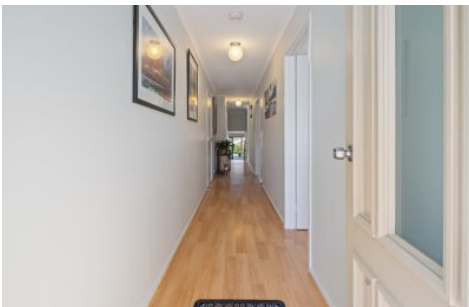





MAGAIN



32A Carolyn Avenue Morphett Vale SA

3  **1**  **1** 

Built in 2015 by award winning Hickinbotham Homes, this modern and stylish home offers all the space and privacy of a standalone property while relishing the benefits of easy-care living so you can do more of what you love in your downtime. The layout is open and elegant with a host of modern finishes and fixtures throughout.

Type	: House
Price	: \$ 545,000
Land Size	: 348 sqm
View	: https://www.magain.com.au/property/32a-carolyn-avenue-morphett-vale-sa/8427875


Upon entering the home, a long hallway connects you from the entry down to the expansive open-plan kitchen, dining and living area. Here, gathering with friends is made easy thanks to the abundance of natural light and split system reverse cycle air-conditioning or you can step outside to the alfresco area and enjoy outdoor entertaining in style. From an intimate dinner for two to a gourmet feast for guests, the kitchen can do it all. There are quality appliances, including

[For full version visit the website](https://www.magain.com.au)

<https://www.magain.com.au>
Magain Real Estate

Shop 2, 32 Saltfleet Street Port Noarlunga SA
08 8382 0029

RWT



A diagram of a shed, represented by a light blue rectangle with a black border. The text "SHED" is written in bold black capital letters, and the dimensions "3.20 X 1.60" are written in black capital letters below it.

