

MAGAIN



2 Shearwater Place Noarlunga Downs SA

3 1 8

Positioned on a desirable corner allotment, the beautifully landscaped gardens welcome you home, inviting you to step inside this exceptional home you will be proud to call your own. This impressive property offers spacious and flexible living along with a good-size block of around 746m² in a family friendly location.

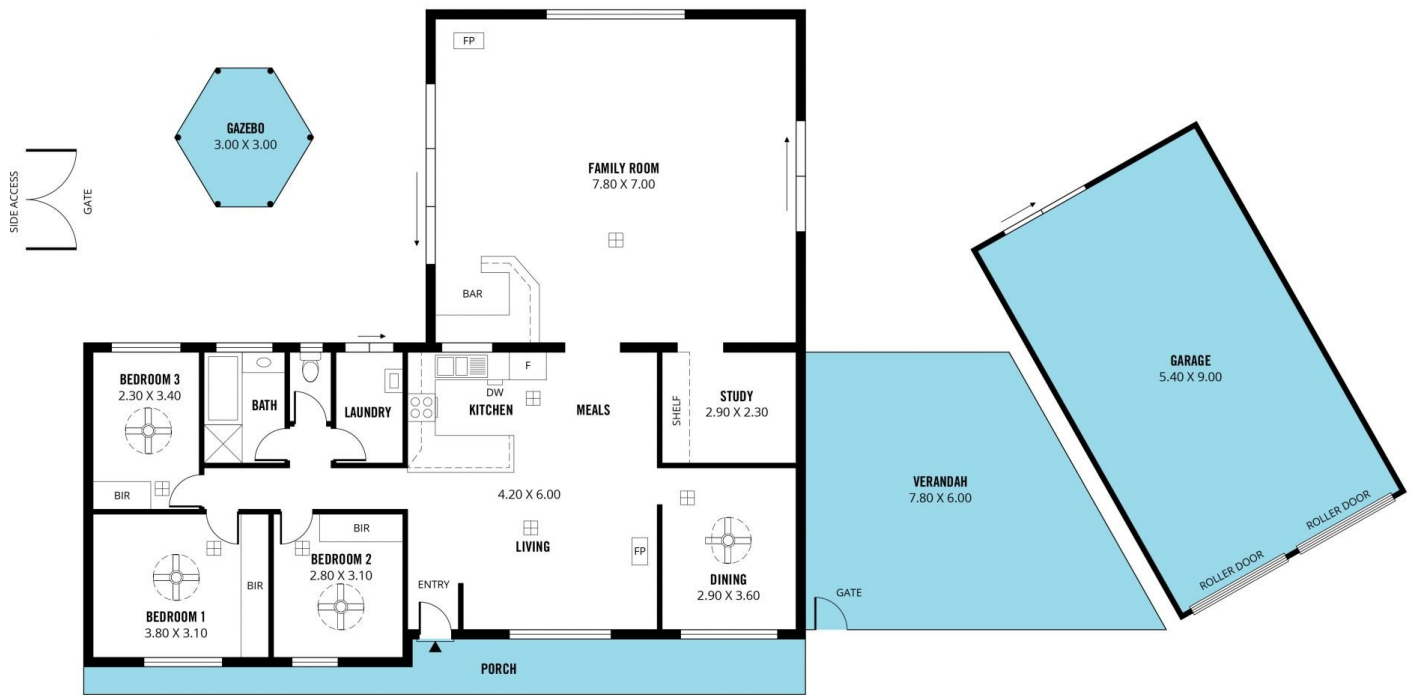
Type : House
Price : \$ 600,000
Land Size : 746 sqm
View : <https://www.magain.com.au/property/2-shearwater-place-noarlunga-downs-sa/8427885>

The well-designed floor plan creates a sense of seamless flow between the living spaces, with a spacious living area providing a warm welcome to the home, a combined kitchen and dining room, and a massive family room. Gorgeous slate stone floors flow underfoot, from the entry through to the kitchen, meals area and the light filled living area, while the gas fireplace will keep this space warm and cosy in the cooler months. The modern kitchen comes

[For full version visit the website](https://www.magain.com.au)

<https://www.magain.com.au>
Magain Real Estate

Shop 2, 32 Saltfleet Street Port Noarlunga SA
08 8382 0029



Scale in metres. This drawing is for illustration purposes only. All measurements are approximate and details intended to be relied upon should be independently verified.

Produced by The Fotobase Group