

MAGAIN



2 Ellis Street Port Noarlunga SA

3 2 1

Situated in the highly sought-after seaside suburb of Port Noarlunga, this spacious three-bedroom home is ideal for those looking for comfortable family living in a peaceful location. Set on a huge corner allotment of around 920m² this well-kept residence provides the ideal family home with further room to update and extend over time.

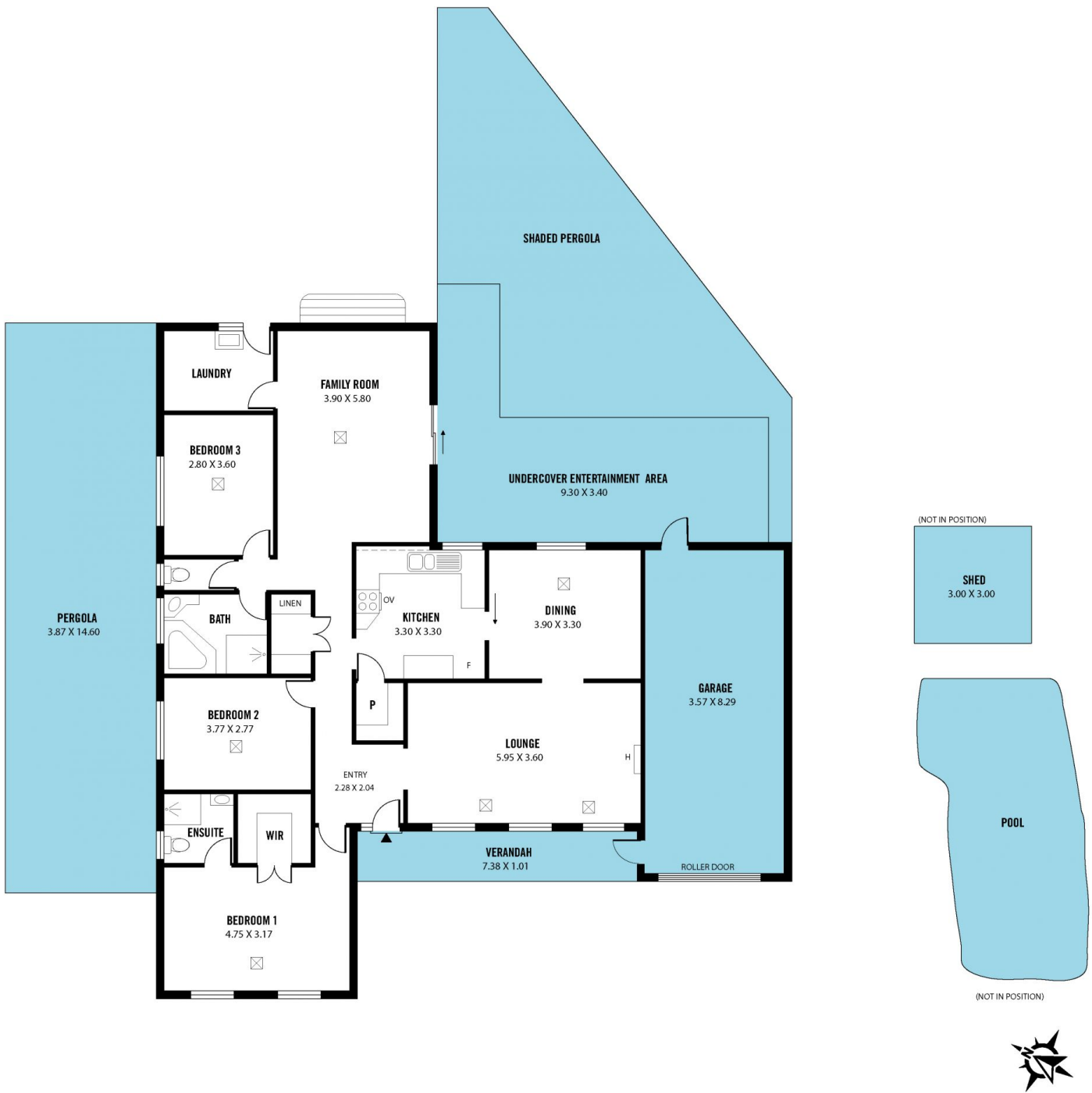
Type : House
Price : \$ 750,000
Land Size : 920 sqm
View : <https://www.magain.com.au/property/2-ellis-street-port-noarlunga-sa/8427892>

This well-presented home greets you with a light-filled entrance foyer enhanced with beautiful slate flooring, while the adjoining formal lounge room is filled with plenty of natural light thanks to the triple windows. This large room boasts a feature brick wall, a gas fireplace and carpet flooring, creating a warm and inviting atmosphere where quality family time will be enjoyed. The updated kitchen is centrally positioned between the formal dining room and

[For full version visit the website](https://www.magain.com.au)

<https://www.magain.com.au>
Magain Real Estate

Shop 2, 32 Saltfleet Street Port Noarlunga SA
08 8382 0029



Scale in metres. This drawing is for illustration purposes only. All measurements are approximate and details intended to be relied upon should be independently verified.

Produced by The Fotobase Group