

MAGAIN



14 Gerald Court Christie Downs SA

3 2 4

Please contact Scott McPharlin from Magain Real Estate for all your property advice.

This updated family home is just a little bit different. Neat and tidy, and updated to incorporate a beautiful light colour scheme throughout, it has such a lovely, welcoming feel. Set on a big block of around 760m², on the high side of the road, the views over the park are superb. There's a playground to entertain the kids too!

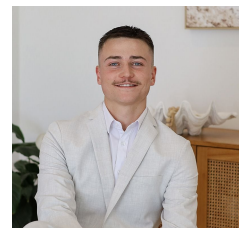
So bright and functional there's hard floors throughout making this home easy to keep clean, and perfect for allergy sufferers. Both bathrooms feature a large shower alcove, tiles all the way to the ceiling, and plenty of storage for all your bits and bobs. The kitchen has been updated

[For full version visit the website](https://www.magain.com.au/property/14-gerald-court-christie-downs-sa/8427937)

Type : House
Price : \$ 748,000
Land Size : 760 sqm
View : <https://www.magain.com.au/property/14-gerald-court-christie-downs-sa/8427937>



Scott McPharlin
08 8382 0029



Patrick Chay
08 8382 0029

<https://www.magain.com.au>
Magain Real Estate

Shop 2, 32 Saltfleet Street Port Noarlunga SA
08 8382 0029

