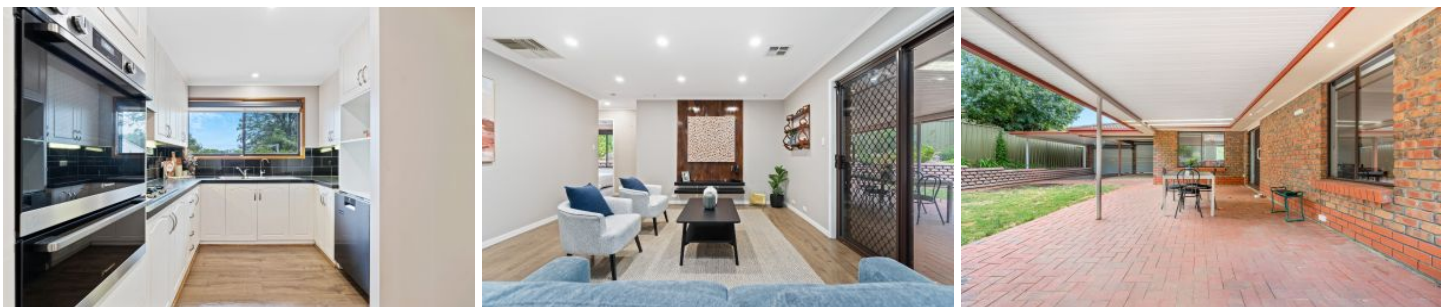


MAGAIN



4 Gorton Court Trott Park SA

3 2 2

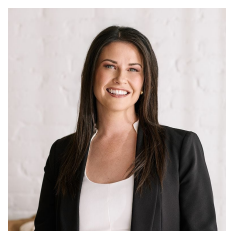
Please contact Danielle Comer or Rachael Farror for viewing times.

Positioned on a generous 718 square metre parcel of land in the beautiful tree lined streets of Trott Park and at the end of a quiet cul de sac, this impressive family home presents 160sqm of internal living, its floorplan well designed to make great use of the space provided with an abundance of storage throughout. Representing an outstanding opportunity for investors looking for that stand out property or the young family wanting nothing to do but move straight in.

Upon entry you are greeted by a neat hallway which blends seamlessly past a large formal lounge adjoining the formal

[For full version visit the website](#)

Type : House
Price : \$ 672,500
Building Size : 160 sqm
Land Size : 718 sqm
View : <https://www.magain.com.au/property/4-gorton-court-trott-park-sa/8427968>



Danielle Comer
08 8322 6111



Scale in metres. This drawing is for illustration purposes only. All measurements are approximate and details intended to be relied upon should be independently verified.

Produced by **The Fotobase Group**