

MAGAIN



33 Enginehouse Drive Sheidow Park SA

6 3 2

Please contact Danielle Comer or Rachael Farror for viewing times.

Perfectly positioned amongst quality homes on a beautiful tree lined street in Sheidow Park, this breathtaking home with approx 375sqm of internal and external living has a commanding street presence and has been sensibly built to make great use of the natural curves of the land, it really needs to be seen to be believed.

Built in 2004, it offers a neutral palette and high-end features, leaving nothing to do but move straight in. The homes split level two story design, stunning Jarrah solid timber floors, high ceilings and large windows create the feeling of space and luxurious living throughout.

[For full version visit the website](https://www.magain.com.au/property/33-enginehouse-drive-sheidow-park-sa/8427985)

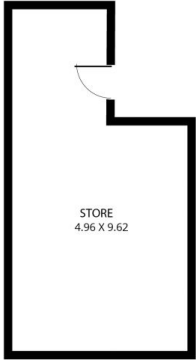
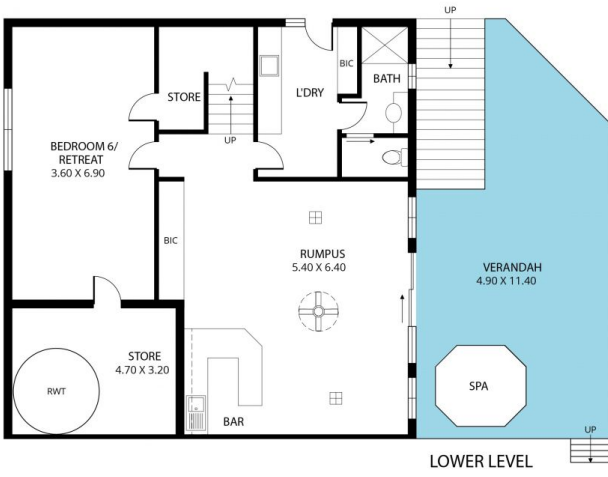
Type : House
Price : \$ 980,000
Building Size : 375 sqm
Land Size : 1053 sqm
View : <https://www.magain.com.au/property/33-enginehouse-drive-sheidow-park-sa/8427985>



Danielle Comer
08 8322 6111

<https://www.magain.com.au>
Magain Real Estate

Shop 3, Happy Valley Shopping Centre, 50 Kenihans H
08 8322 6111



Scale in metres. This drawing is for illustration purposes only. All measurements are approximate and details intended to be relied upon should be independently verified.

Produced by The Fotobase Group