

MAGAIN



102 Woodend Road Trott Park SA

3 1 1

Please contact Rachael Farror or Danielle Comer for viewing times.

Welcome to your dream home in the popular suburb of Trott Park! This original house sitting on a generous 600 sqm block offers a perfect blend of comfort, convenience, and character. As you step through the front door, you'll be greeted by an inviting open plan layout, seamlessly combining the kitchen, living, and meals areas.

The well-appointed kitchen features a gas cooktop and a strategically placed window overlooking the rear yard, allowing natural light to flood in while you prepare delicious meals. Its functional design ensures efficient workflow and easy interaction with guests or family members.

[For full version visit the website](https://www.magain.com.au/property/102-woodend-road-trott-park-sa/8427999)

Type : House
Price : \$ 546,500
Building Size : 83 sqm
Land Size : 600 sqm
View : <https://www.magain.com.au/property/102-woodend-road-trott-park-sa/8427999>



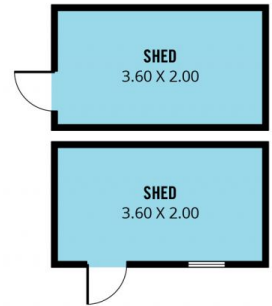
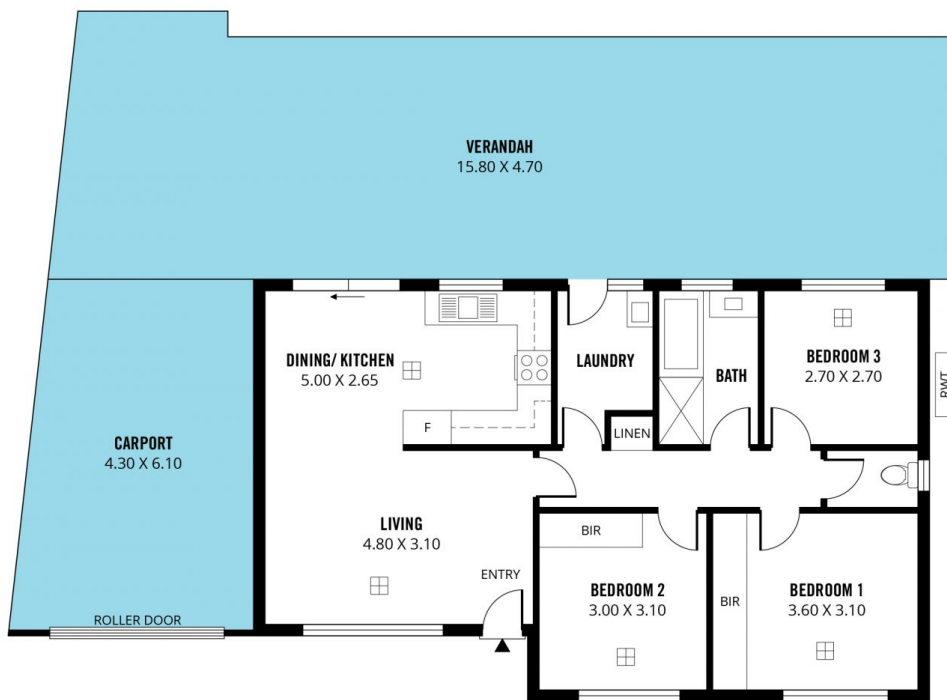
Rachael Farror
08 8322 6111



Danielle Comer
08 8322 6111

<https://www.magain.com.au>
Magain Real Estate

Shop 3, Happy Valley Shopping Centre, 50 Kenihans H
08 8322 6111



Scale in metres. This drawing is for illustration purposes only. All measurements are approximate and details intended to be relied upon should be independently verified.

Produced by **The Fotobase Group**