

MAGAIN



8 Sandy Glass Court SHEIDOW PARK SA

3 1 1

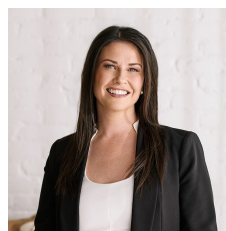
Beautiful throughout, this property includes three good size bedrooms, access to two way bathroom from main bedroom and lovely kitchen overlooking the open plan family living and meals.

This courtyard block is low maintenance, offers a handy garden shed, single carport and backs onto a beautiful reserve.

Don't miss out on this excellent opportunity.

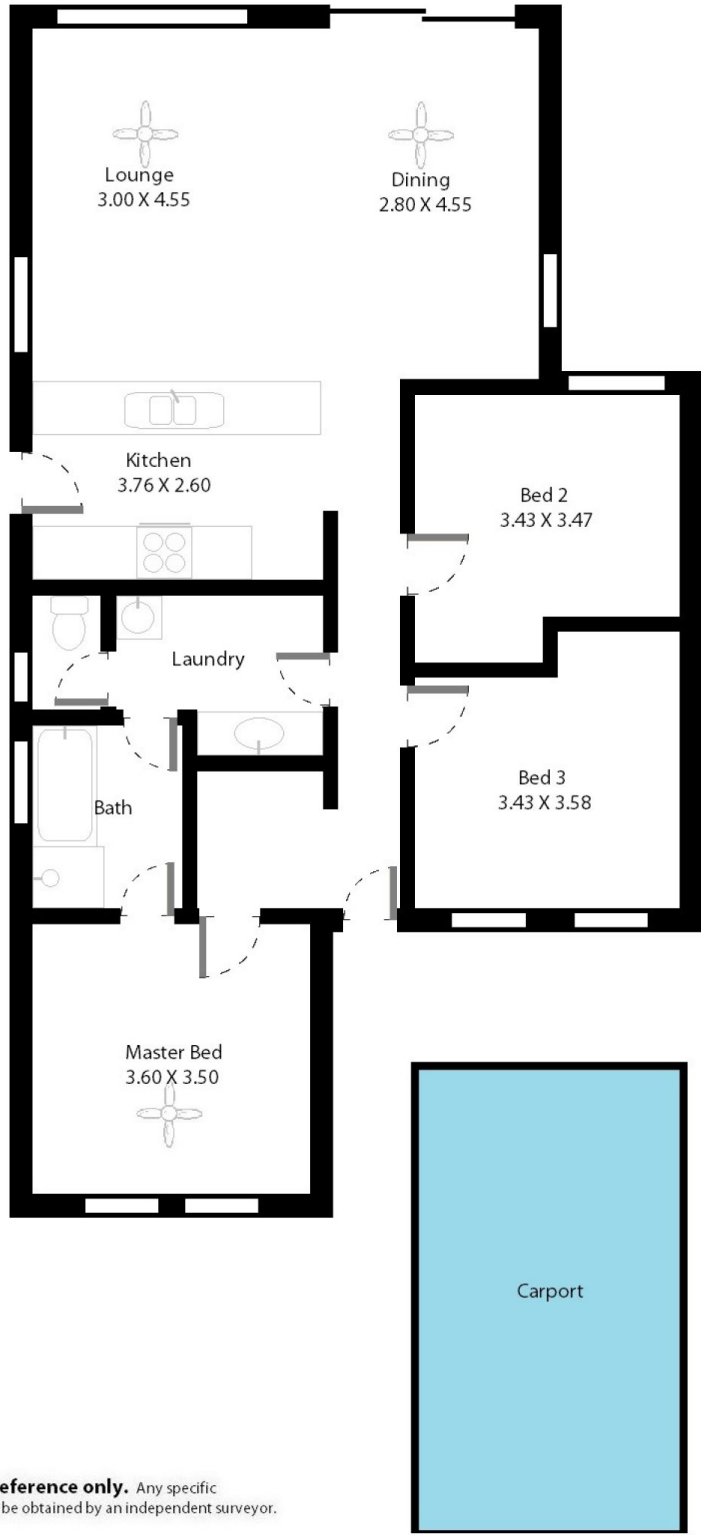
**** PLEASE NOTE: THE RENT FOR THIS PROPERTY WILL BE INCREASING AFTER 6 MONTHS, TO \$325.00 PER WEEK**

Type : House
Building Size : 12 sqm
Land Size : 318 sqm
View : <https://www.magain.com.au/property/8-sandy-glass-court-sheidow-park-sa/8428735>



Danielle Comer
08 8322 6111

8 Sandy Glass Court Sheidow Park, South Australia.



Picture intended as a reference only. Any specific measurements required should be obtained by an independent surveyor.