

# MAGAIN



## 35 Montague Drive SHEIDOW PARK SA

3 1 2

Please contact Danielle Comer for viewing times.

Impeccably presented this superb home is sure to impress. Located in the sought after Southbank estate in Sheidow Park, you can enjoy the convenience of being close to public transport, local park, shops and beautiful coastline plus the added bonus of being located across from a wonderful quiet reserve and within walking distance to Woodend Primary School.

Offering three bedrooms, master suite complete with sizable walk in robe and access to the two way bathroom. The large open plan family living, dining and sensationally updated kitchen with dishwasher and large breakfast bench create the hub of the home. The spacious second living

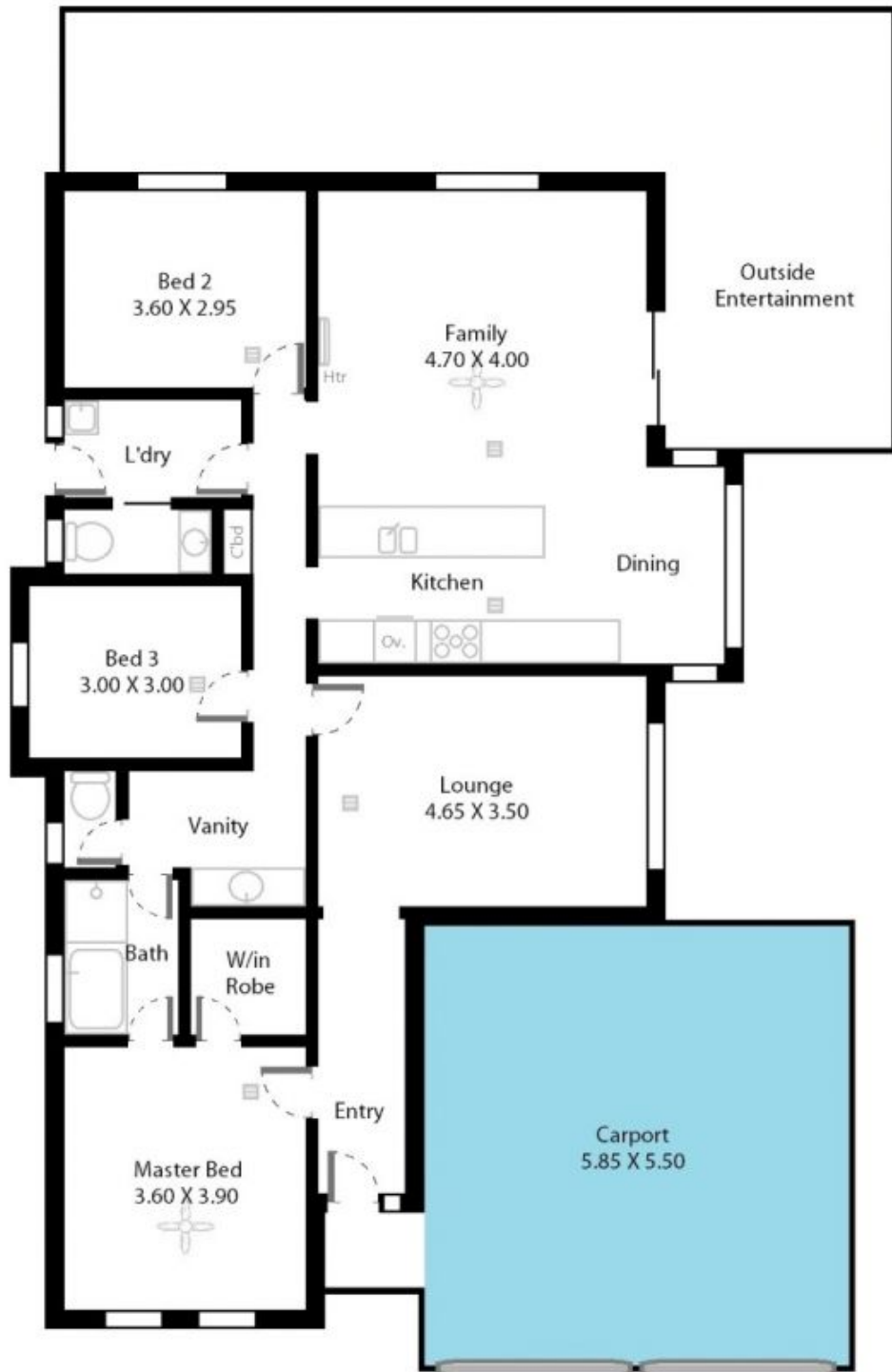
[For full version visit the website](https://www.magain.com.au/property/35-montague-drive-sheidow-park-sa/8429357)

**Type** : House  
**Building Size** : 16 sqm  
**Land Size** : 440 sqm  
**View** : <https://www.magain.com.au/property/35-montague-drive-sheidow-park-sa/8429357>



**Danielle Comer**  
08 8322 6111

35 Montague Drive Sheidow Park, South Australia.



**Picture intended as a reference only.** Any specific measurements required should be obtained by an independent surveyor.