

MAGAIN



2 Epsilon Close WOODCROFT SA

3 1 1

Please contact Danielle Comer for viewing times.

Lovingly cared for, this beautifully presented home in the heart of Woodcroft is just moments from local shops, transport and a list of quality schools.

Offering three generous sized bedrooms, master boasting a walk in robe and access to the two way bathroom and bedroom two and three with built in wardrobes. The fantastic open plan living creates the hub of this gorgeous home, consisting of kitchen, family living and dine. The superbly updated kitchen with plenty of cupboard and bench space for all your storage needs is sure to cater for master chef in your family. The separate formal lounge upon entry means the whole family can spread out.

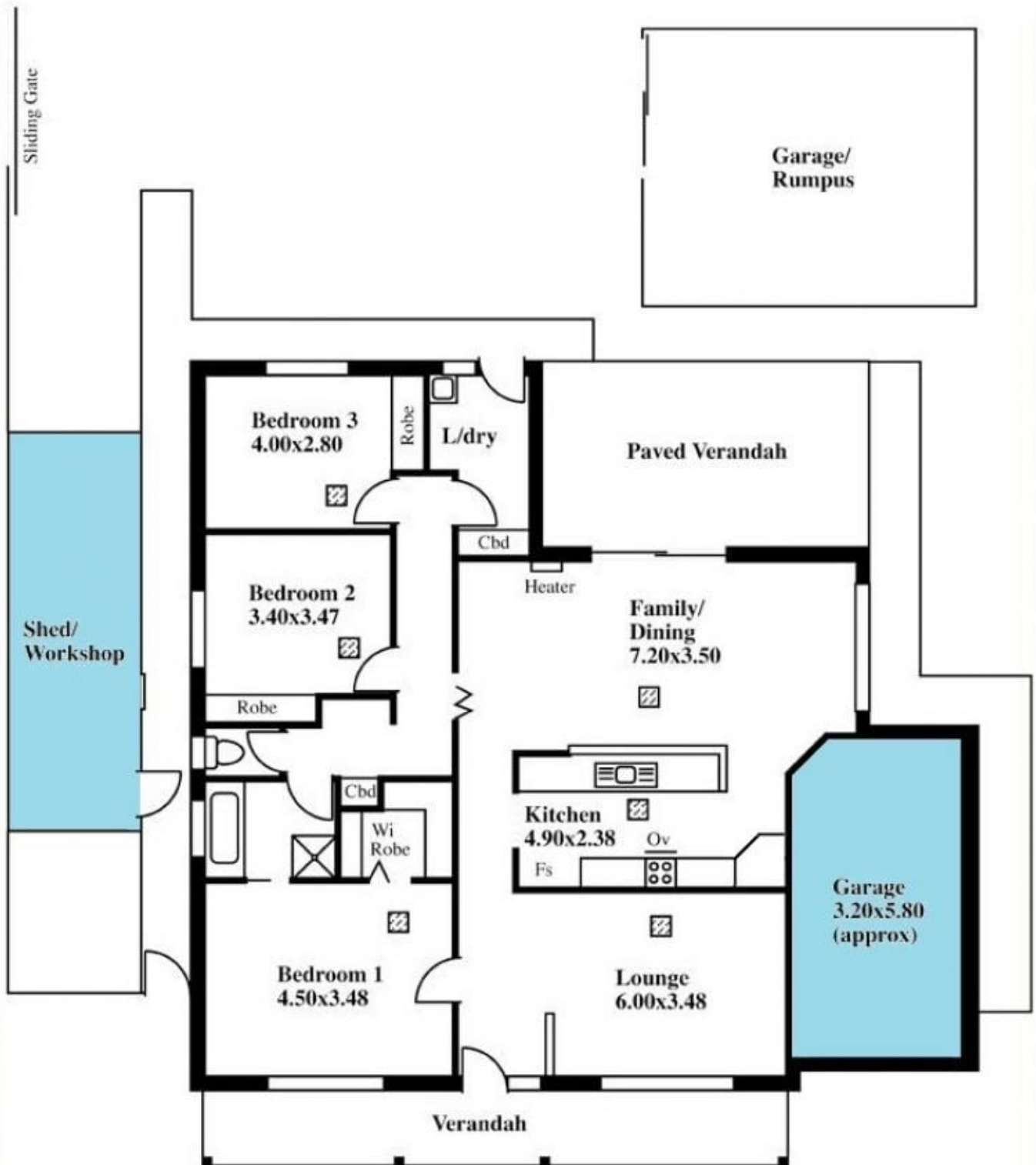
[For full version visit the website](https://www.magain.com.au/property/2-epsilon-close-woodcroft-sa/8429395)

Type : House
Building Size : 17 sqm
Land Size : 565 sqm
View : <https://www.magain.com.au/property/2-epsilon-close-woodcroft-sa/8429395>



Danielle Comer
08 8322 6111

2 Epsilon Close Woodcroft, South Australia.



Picture intended as a reference only. Any specific measurements required should be obtained by an independent surveyor.