

MAGAIN



43 Curlew Street SHEIDOW PARK SA

4 2 2

Please contact Danielle Comer for viewing times.

This immaculately presented home is located in the ever sought after Southbank Estate. Enjoy the convenience of being close to public transport, schools, parks, shops and beautiful coastline.

Be impressed by the well designed and landscaped front yard as you drive into the double roller door garage supporting drive through access. Make use of the additional off street parking to the side, ideal for the boat, caravan or trailer.

When you enter this superior property you'll appreciate the quality construction and dimensions of space. Immense quality is shown throughout with the truly enormous formal

[For full version visit the website](https://www.magain.com.au/property/43-curlew-street-sheidow-park-sa/8429428)

Type : House
Building Size : 19 sqm
Land Size : 576 sqm
View : <https://www.magain.com.au/property/43-curlew-street-sheidow-park-sa/8429428>

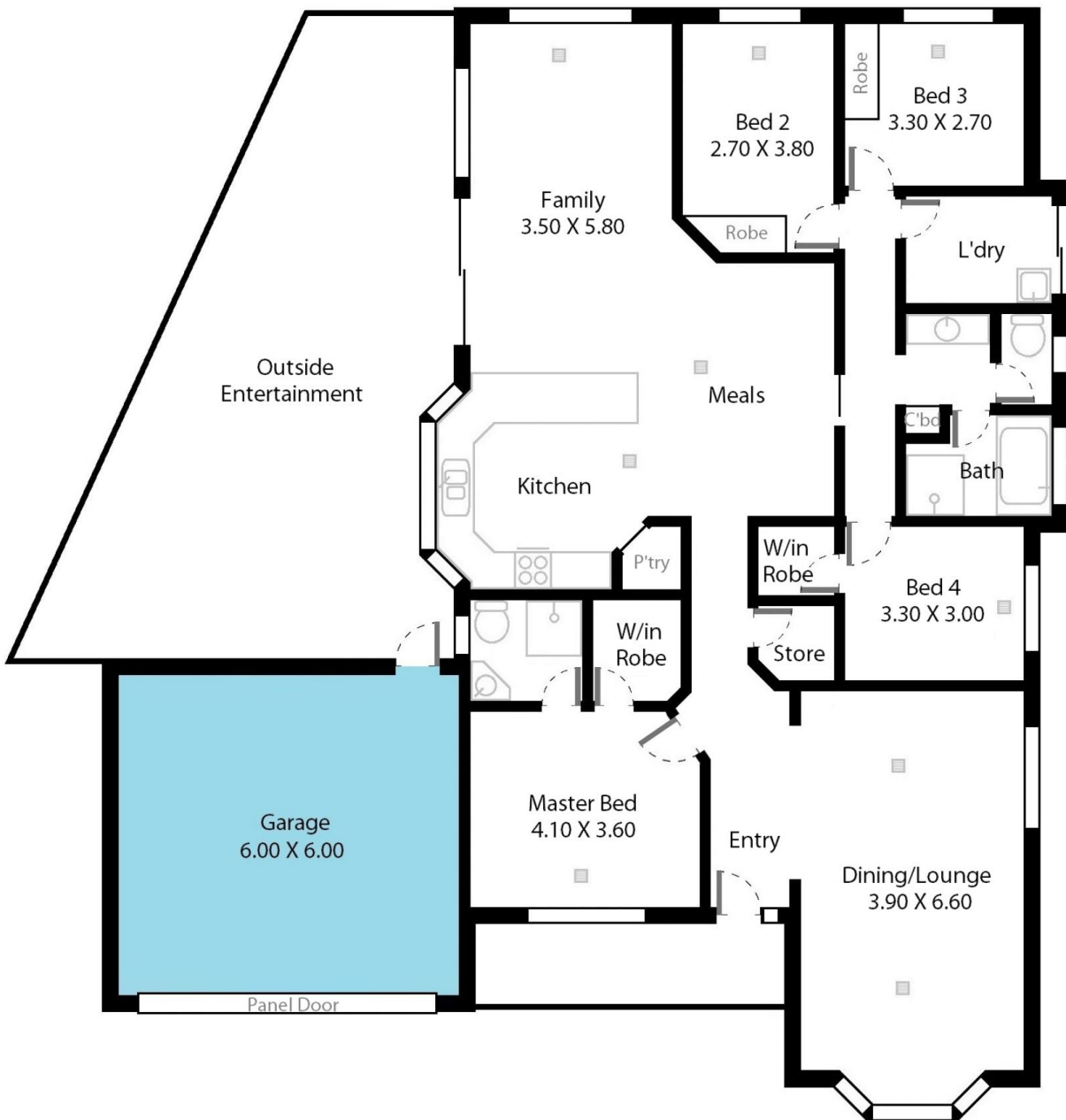
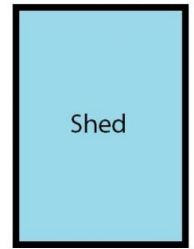


Danielle Comer
08 8322 6111

<https://www.magain.com.au>
Magain Real Estate

Shop 3, Happy Valley Shopping Centre, 50 Kenihans H
08 8322 6111

43 Curlew Street Sheidow Park, South Australia.



Picture intended as a reference only. Any specific measurements required should be obtained by an independent surveyor.