

MAGAIN



3/11 Waterman Terrace MITCHELL PARK SA

2  1  1 

Contact Stuart Costello for viewing times.

This attractive two bedroom unit is a great find. Inside is a spacious, light and airy lounge with space for dining leading onto a well equipped kitchen. There are two good size bedrooms with built in robes and a large bathroom with laundry facilities and a split systems for all round comfort.

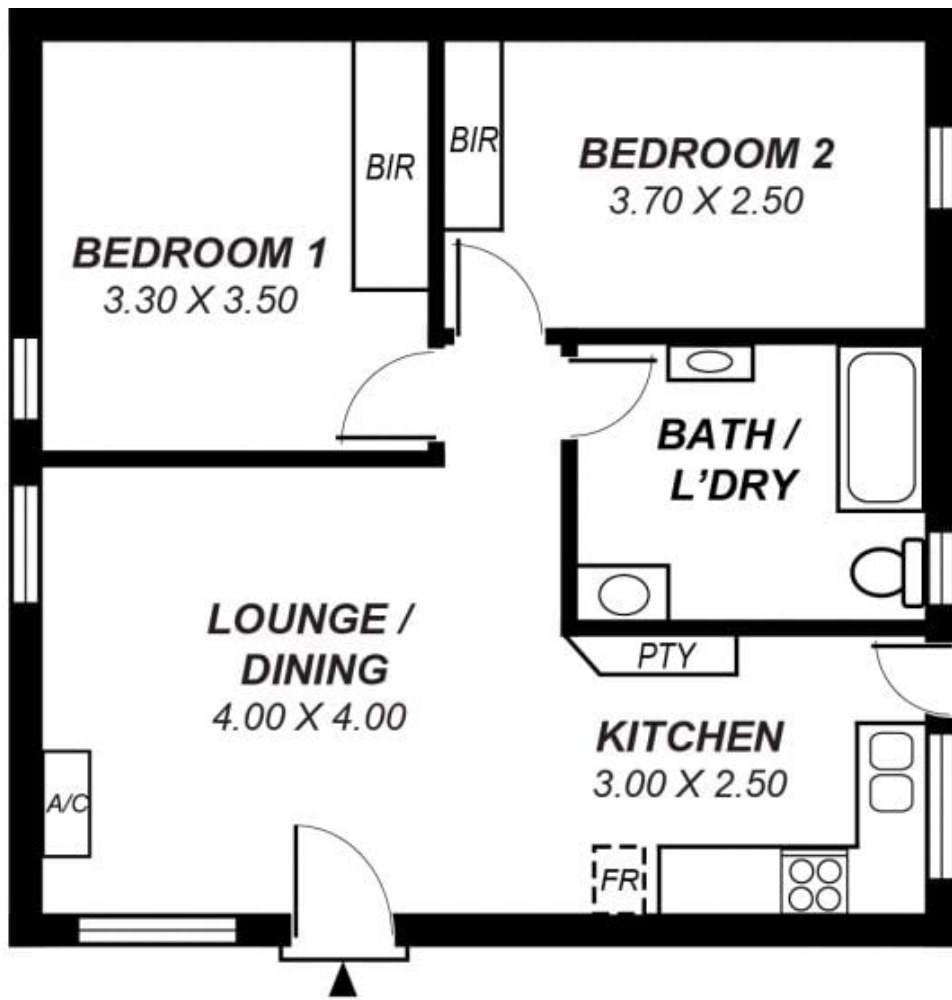
Outside there is an allocated parking space and well maintained grounds.

Located in an up and coming area surrounded by new development and infrastructure, the unit is within easy commute to the city. Nearby you will find the new Tonsley Park redevelopment and many other conveniences and facilities such as Westfield Marion and Flinders.

For more information or to register your interest contact Stuart Costello. (RLA 222182)

[For full version visit the website](https://www.magain.com.au)

Type : Unit
Building Size : 7 sqm
View : <https://www.magain.com.au/property/31-1-waterman-terrace-mitchell-park-sa/84-29434>



*This drawing is for illustration purposes only .
 All measurements are approximate and details intended
 to be relied upon should be independently verified.*

Area	<i>m²</i>
Living:	49.05
Total:	49.05