

# MAGAIN



## 9 Malcolm Avenue MARION SA

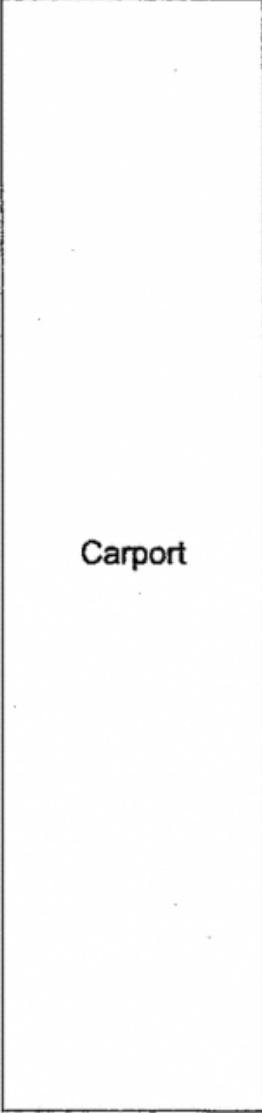
3 1 3

Extended to offer space for the family this 3 bedroom home has a study or huge walk in robe plus a formal lounge and a family room. The entertainers room opens to a lovely private rear yard with a huge garage that even has a lined studio or office inside. The options are endless and for those who enjoy working from home this would be ideal. There is ample space for cars in the garage or under the triple length carport behind the secure roller door. Convenience of location is the key given this homes proximity to Westminster School, Marion Primary School and nearby recreational areas plus the central location between Westfield Marion or Park Holme Shopping Centre. In short a spacious home in a sought after location all ready to go. Call for an inspection now!

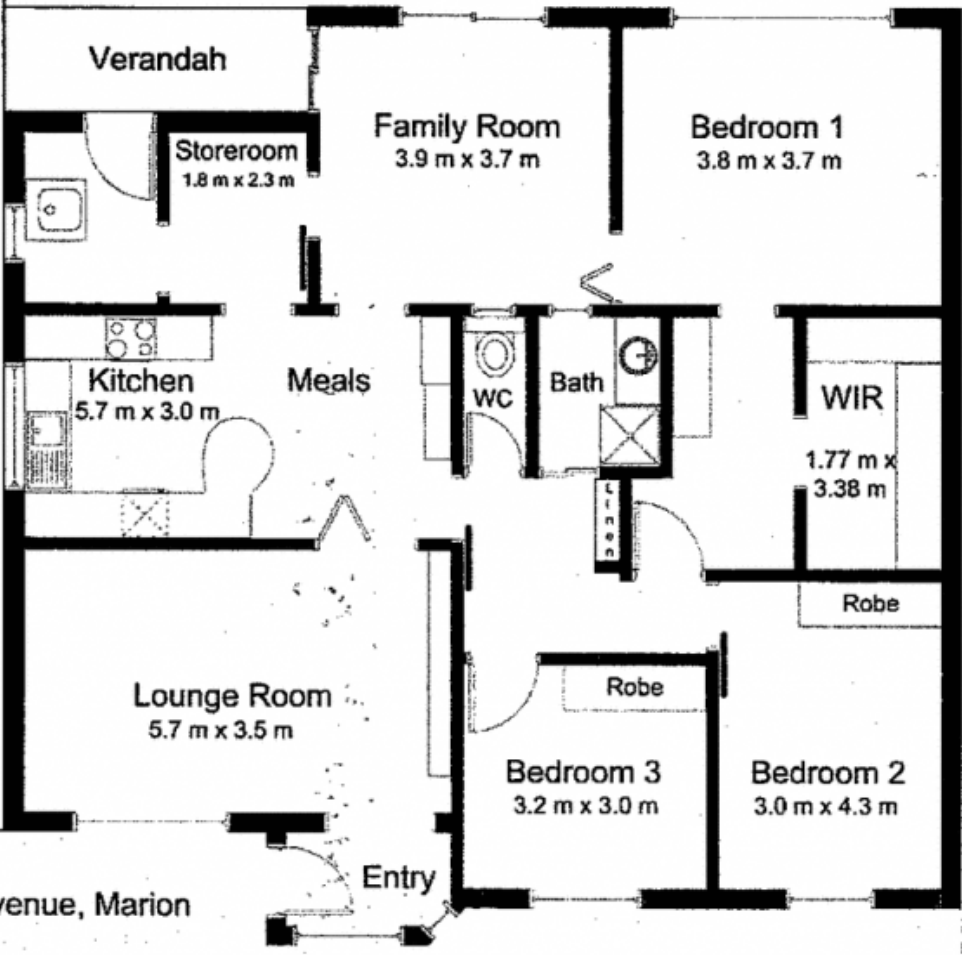
**Type** : House  
**Land Size** : 700 sqm  
**View** : <https://www.magain.com.au/property/9-malcolm-avenue-marion-sa/8429534>



Shed  
9.5 m x 5.4 m



Carport



Verandah

Storeroom  
1.8 m x 2.3 m

Family Room  
3.9 m x 3.7 m

Bedroom 1  
3.8 m x 3.7 m

Kitchen  
5.7 m x 3.0 m

Meals

WC

Bath

WIR

1.77 m x  
3.38 m

Robe

Lounge Room  
5.7 m x 3.5 m

Robe

Bedroom 3  
3.2 m x 3.0 m

Bedroom 2  
3.0 m x 4.3 m

Entry

9 Malcolm Avenue, Marion