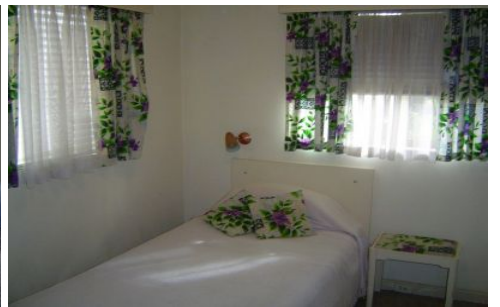
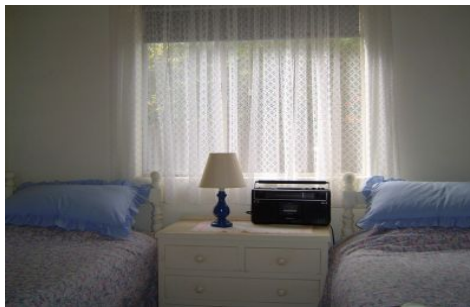


# MAGAIN



## 40 Hardy Avenue GLENGOWRIE SA

3  1  1 

**NEW RELEASE** An original, well maintained, war service home, with 3 bedrooms, separate lounge room, separate dining open to galley kitchen, with rear patio overlooking backyard and gardens. Land size 55 ft X 122 ft or 600 sqm approx. Ideally suited for renovations and extensions in this quiet tree lined street and also within the Brighton High School zone or handy to Sacred Heart College. The potential is here close to Glenelg and Westfield Marion. Inspection by appointment only

**Type** : House  
**Price** : \$ 299,000  
**Land Size** : 600 sqm  
**View** : <https://www.magain.com.au/property/40-hardy-avenue-glengowrie-sa/8429579>

