

# MAGAIN



60 Woodend Road SHEIDOW PARK SA

4 2 2

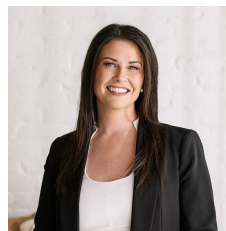
Be quick as this wonderful home in this highly sought after beautiful suburb wont last long. Designed to create that minimalistic and stress-free life that we all crave. Close to public transport, schools, parks, shops and the beautiful southern coastline.

At the front of the home you will find the master bedroom with delightful bay window, walk-in wardrobe and ensuite. Tucked away towards the back of the home are the other three bedrooms, two of which have large built-in robes and all share the main three way bathroom.

The spacious and fully equipped kitchen with walk in pantry creates the hub of the home. Balancing neatly between both the family living and meals and the separate formal lounge and dine which gives you and your family the space you need to spread out in comfort.

[For full version visit the website](#)

**Type** : House  
**Building Size** : 23 sqm  
**Land Size** : 659 sqm  
**View** : <https://www.magain.com.au/property/60-woodend-road-sheidow-park-sa/8429654>



**Danielle Comer**  
08 8322 6111

60 Woodend Road Sheidow Park, South Australia

