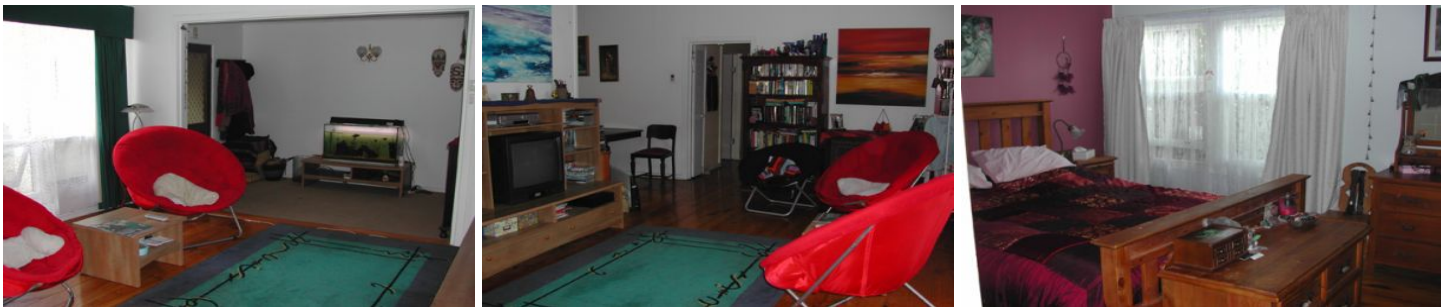


MAGAIN



17 Danae Street DOVER GARDENS SA

3 1 2

An ideal rental prospect with future development potential subject to standard approvals. The timber frame home comprises 3 good sized bedrooms open lounge and dine plus a split level rumpus or games room. Undoubtedly the real value is in the land and this generous allotment is over 880m² with a frontage over 24m. With the on going development in the this rapidly changing area this site is sure to reward now or in the future.

Type : House
Building Size : 13 sqm
Land Size : 888 sqm
View : <https://www.magain.com.au/property/17-danae-street-dover-gardens-sa/8429715>