

MAGAIN



19 Harcourt Avenue CLOVELLY PARK SA

3 1 1

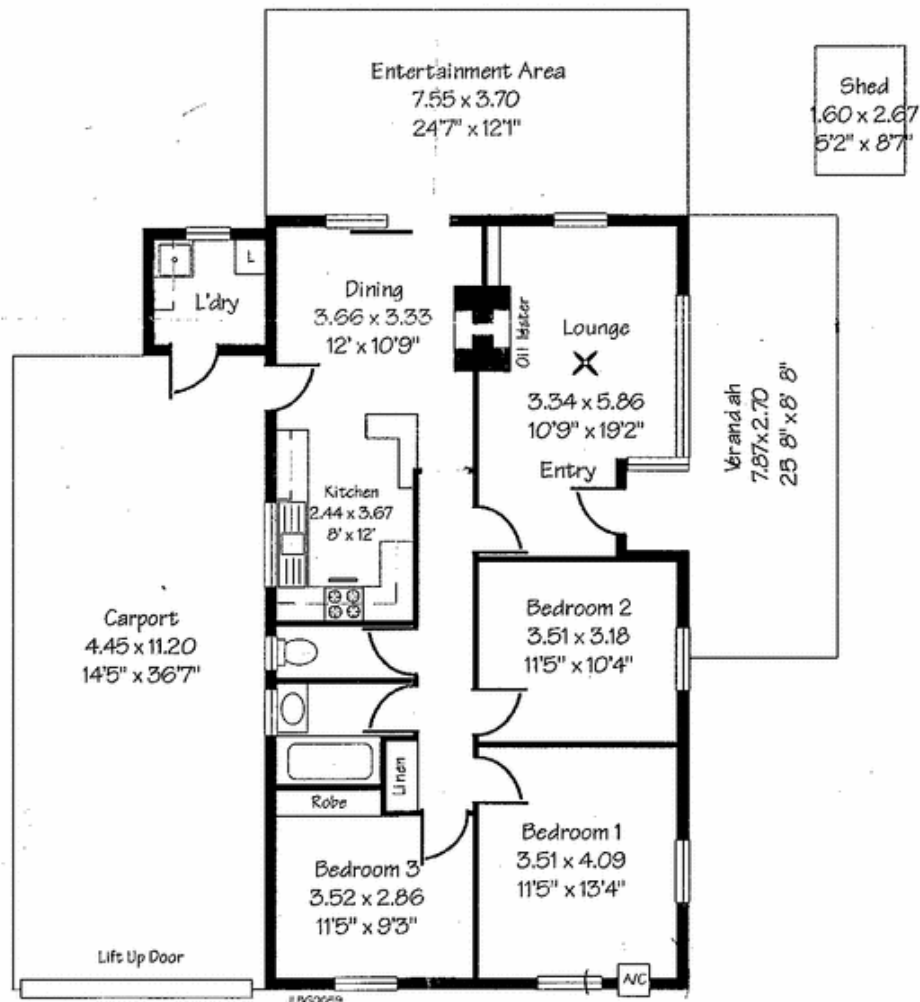
A fantastic opportunity to establish yourself in an ideal residential location within an affordable price range. Features include 3 bedrooms, formal lounge room, separate dining, and a near new kitchen and bathroom. Outside is an all weather entertaining and bbq area, lock up carport for 2 cars, front verandah overlooking a private serenity garden, plus a front lawn and yard set on a corner allotment with 2 street frontages. Close to all amenities, and only a 20 minute drive into the city your inspection is highly recommended.

Type : House
Building Size : 11 sqm
Land Size : 500 sqm
View : <https://www.magain.com.au/property/19-harcourt-avenue-clovelly-park-sa/8429755>

19 Harcourt Avenue, Clovelly Park

Living	: 106.05 sqm (1141.6 sq ft)
Verandah	: 22.79 sqm (245.3 sq ft)
Ent. Area	: 27.94 sqm (300.7 sq ft)
Shed	: 4.27 sqm (45.9 sq ft)
Carport	: 49.84 sqm (536.5 sq ft)
Total	: 210.89 sqm (2270.0 sq ft)

This Drawing is for illustration purposes only.
All measurements are approximate and details intended
to be relied upon should be independently verified.



BUYERS PLEASE NOTE

- While every endeavour has been made to verify the correct detail in this brochure, neither the Agent nor the Vendor accepts liability for any error or omission.
- A4 7183ad