

# MAGAIN



## 40 Worthing Drive SHEIDOW PARK SA

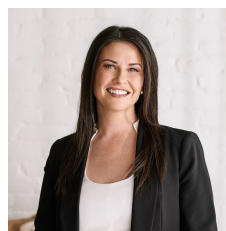
4 2 2

Impeccably presented this superbly designed family home will make your heart tick. Offering four double bedrooms all with built in robes, master suite complete with gorgeous ensuite and sizable walk in robe. Tastefully tiled throughout the main living area, the homes kitchen with dishwasher, walk in pantry, ample cupboard and bench space overlooks the casual living and dining area. This high quality residence also offers a spacious formal lounge, stylish and large main bathroom and plenty of storage space throughout.

Externally this home boasts a large pitched roof entertaining area with modern café blinds and fans, good size lawn area for the children or pets to play and side gate access ideal for bringing in the boat or caravan. Situated on

[For full version visit the website](https://www.magain.com.au/property/40-worthing-drive-sheidow-park-sa/8430228)

**Type** : House  
**Building Size** : 22 sqm  
**Land Size** : 617 sqm  
**View** : <https://www.magain.com.au/property/40-worthing-drive-sheidow-park-sa/8430228>



**Danielle Comer**  
08 8322 6111

