

MAGAIN



41 Mariner Drive SHEIDOW PARK SA

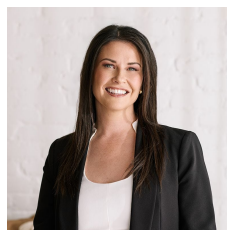
5 3 2

Imagine the opportunity to own a home in one of the South's finest estates ? ?Southbank Estate?. Look no further as the opportunity is knocking on your door.

Generously appointed and immaculately presented this quality built two-storey home could be yours. The modern tone is carried throughout the home from top to bottom. Impressive in size and style, it will suit entertainers and families alike. Offering five bedrooms two with their very own exquisite ensuites. The lower level boasts the large fifth bedroom with ensuite, internal access to the automatic double roller door garage and storage void.

A home that is all about space and comfort, it features a fantastic and versatile floorplan. Upstairs consisting of the

Type : House
Land Size : 600 sqm
View : <https://www.magain.com.au/property/41-mariner-drive-sheidow-park-sa/8430408>

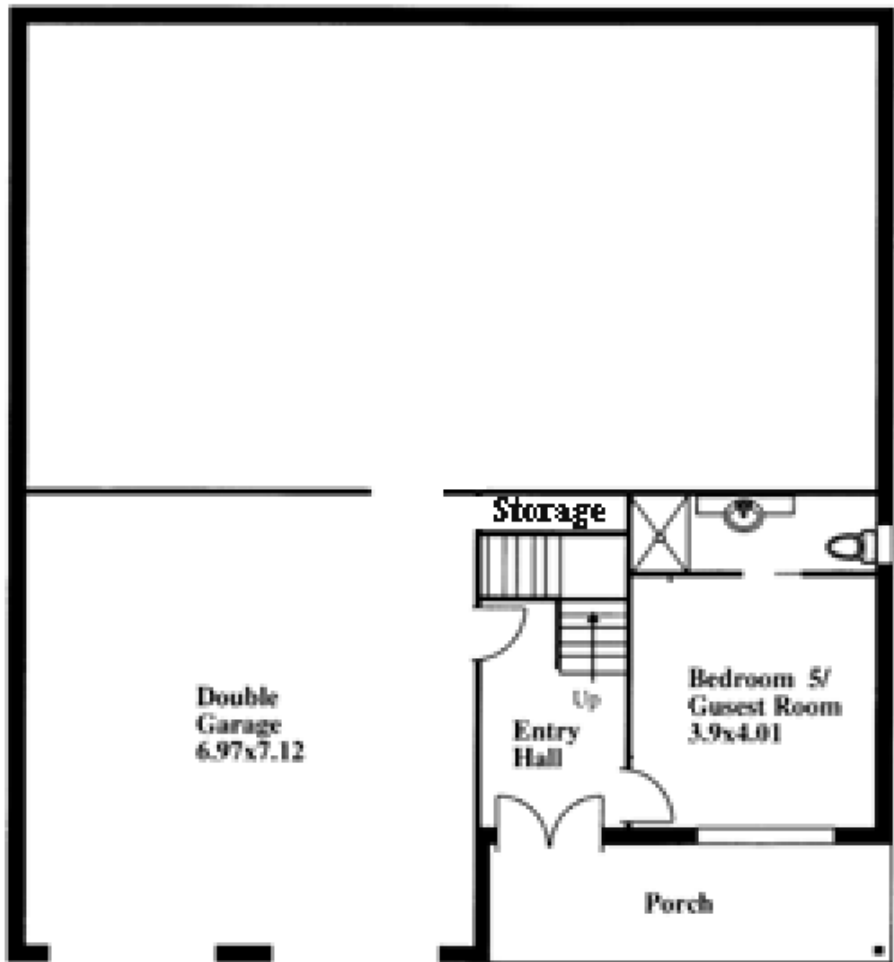


Danielle Comer
08 8322 6111

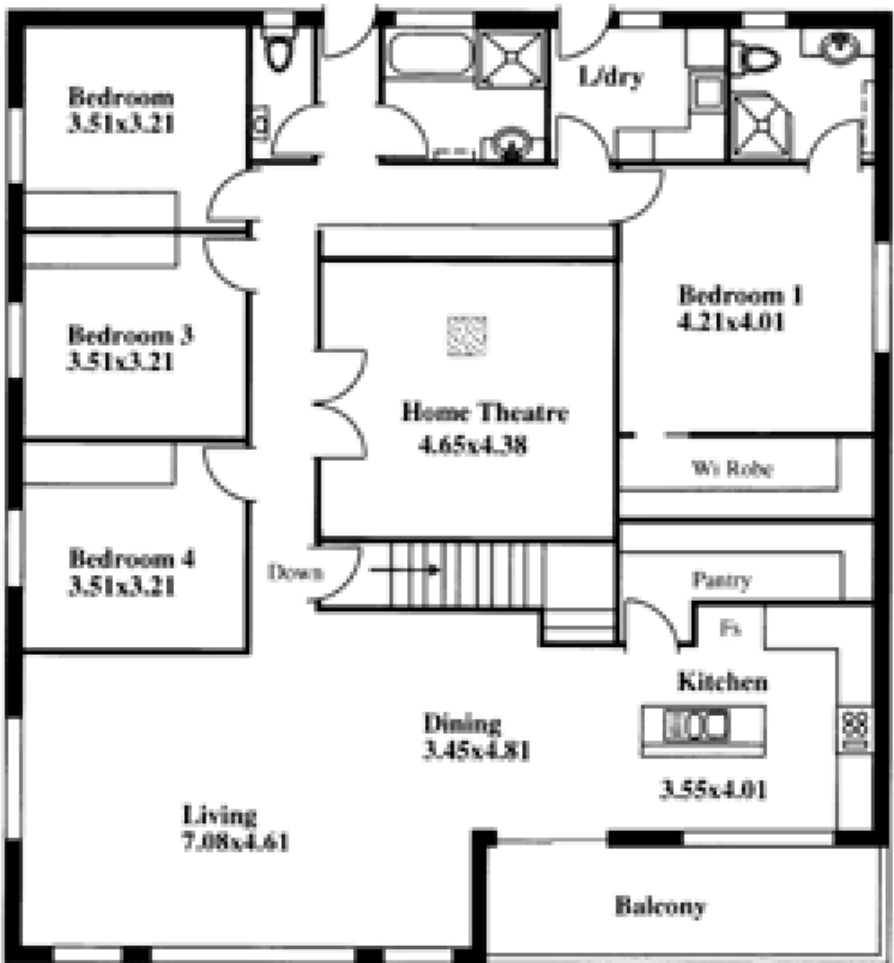
[For full version visit the website](https://www.magain.com.au)

<https://www.magain.com.au>
Magain Real Estate

Shop 3, Happy Valley Shopping Centre, 50 Kenihans H
08 8322 6111



GROUND FLOOR



UPSTAIRS