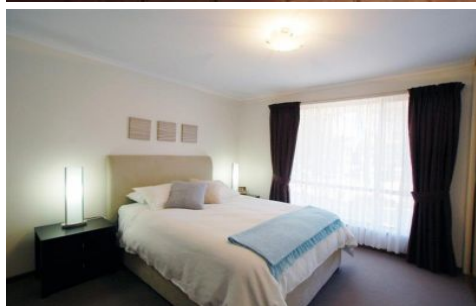


MAGAIN



7 Shiraz Court ABERFOYLE PARK SA

3 2 2

Situated in the much sought after Woodlea Estate on a huge block is the remarkable family home. With views over Aberfoyle Park's rural hills you'll find yourself falling in love with this charmer.

Featuring three well sized bedrooms, the master with built in robes and ensuite. Two separate living areas, one with combustion fire place, all set up for the growing family. Boasting tasteful updates with downlights throughout, ducted air conditioning, gas heating, this home has so much to offer.

Outside you'll find a stunning outdoor entertaining area, with pitched pergola, plenty of space, and cafe blinds for all year round comfort. As you stroll up the stairs to the large

Type : House
Building Size : 16 sqm
Land Size : 964 sqm
View : <https://www.magain.com.au/property/7-shiraz-court-aberfoyle-park-sa/8430434>

[For full version visit the website](#)

<https://www.magain.com.au>
Magain Real Estate

Shop 3, Happy Valley Shopping Centre, 50 Kenihans H
08 8322 6111

