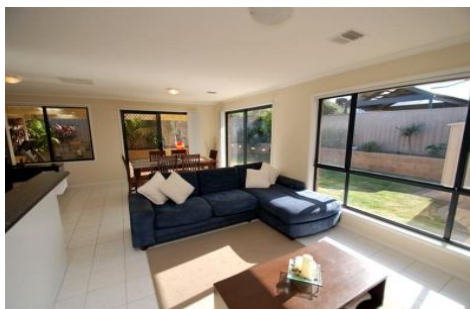




MAGAIN



42 Holdfast Drive SHEIDOW PARK SA

3  2  1 

This delightful modern three bedroom home will appeal especially to the new family, investor or retiree looking for an easy care lifestyle. Offering great street appeal with nicely established gardens and the convenience of location this home is sure to impress.

Type : House
Building Size : 15 sqm
View : <https://www.magain.com.au/property/42-holdfast-drive-sheidow-park-sa/8430552>

Inside this fabulous property the master suite with bay window boasts a sizable walk in robe and ensuite, the kitchen boasts dishwasher and ample cupboard and functional bench space, the family living and dine area is overlooked from the kitchen and provides sliding door access to the lovely rear yard. Outdoors features a huge paved undercover entertaining area great for relaxing with or entertaining friends, good size lawn area for the children or pets to play and a very handy garden/toolshed shed.

[For full version visit the website](#)

