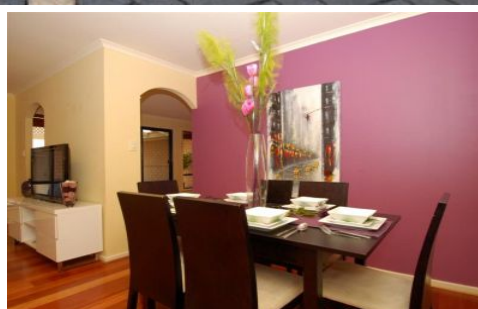


MAGAIN



3 Overland Crescent SHEIDOW PARK SA

3 2 2

Call Danielle Comer on 0431 560 402 for viewing times.

Set up for a low maintenance lifestyle, this beautiful home is ideal for someone looking to start out or even downsize. Forget the hassle of building, just move in and start enjoying everything on offer in this sought after location.

Inside, the home features three generous sized bedrooms, with an ensuite and walk-in robe to the master. There are two very family friendly living areas, a lounge & dine area plus a versatile family living/meals, the kitchen with dishwasher and plenty of cupboard and bench space overlooks the family living/meals area, providing a fantastic heart to the home.

[For full version visit the website](https://www.magain.com.au/property/3-overland-crescent-sheidow-park-sa/8430606)



Type : House
Building Size : 18 sqm
View : <https://www.magain.com.au/property/3-overland-crescent-sheidow-park-sa/8430606>



Danielle Comer
08 8322 6111

3 Overland Crescent, Sheidow Park

LEGEND

-  Air cond ducts
-  Heat ducts

